

El-Fiky's

MINI ATLAS OF
ANATOMY

PART II

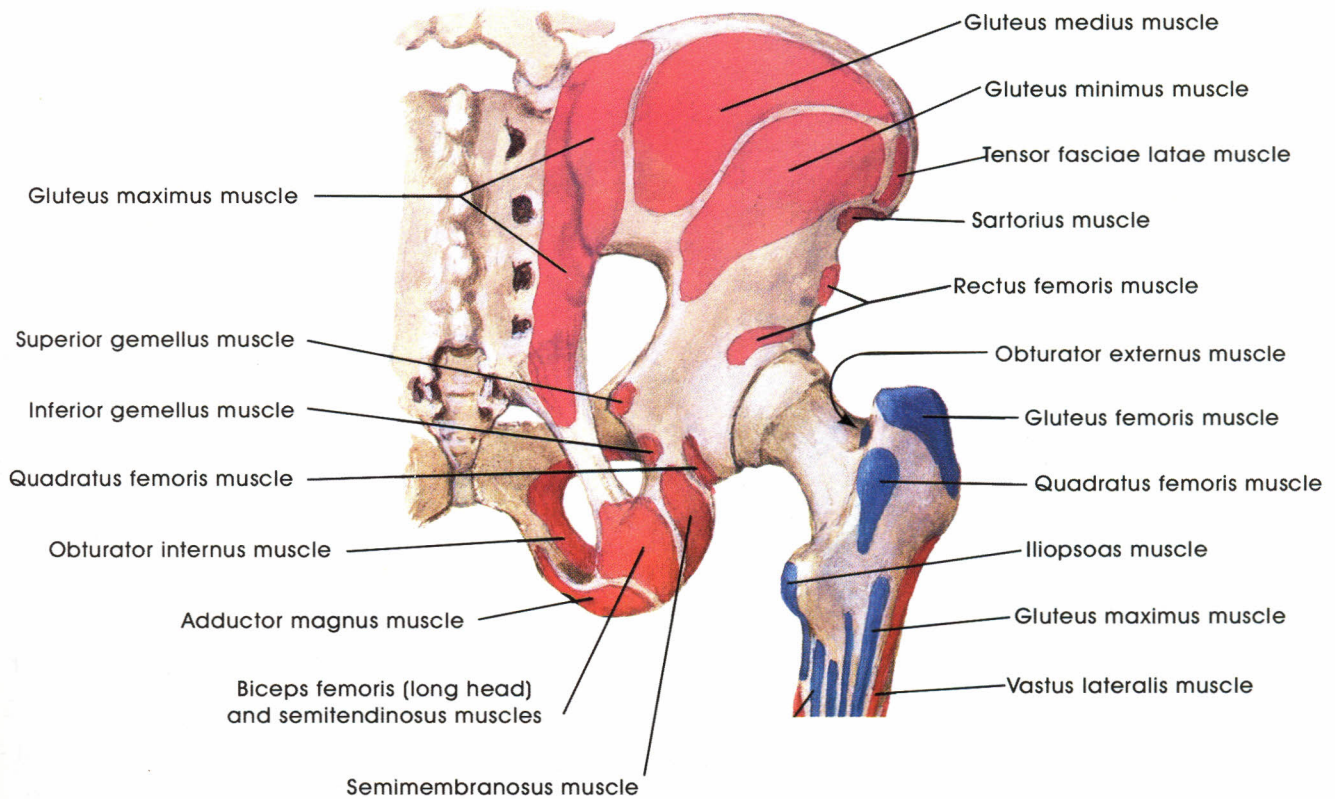
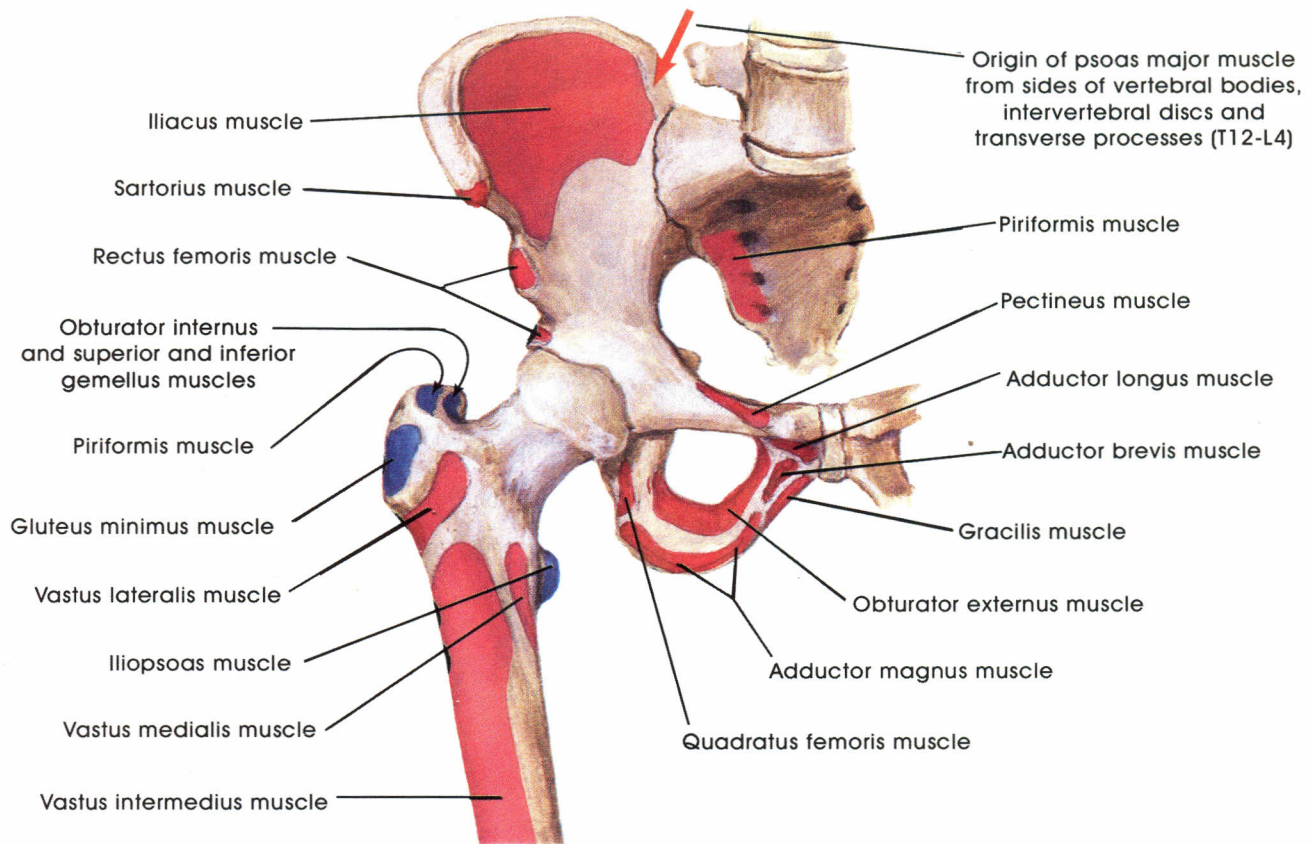
ABDOMEN, PELVIS & PERINEUM



DR. MOHAMED EL-FIKY

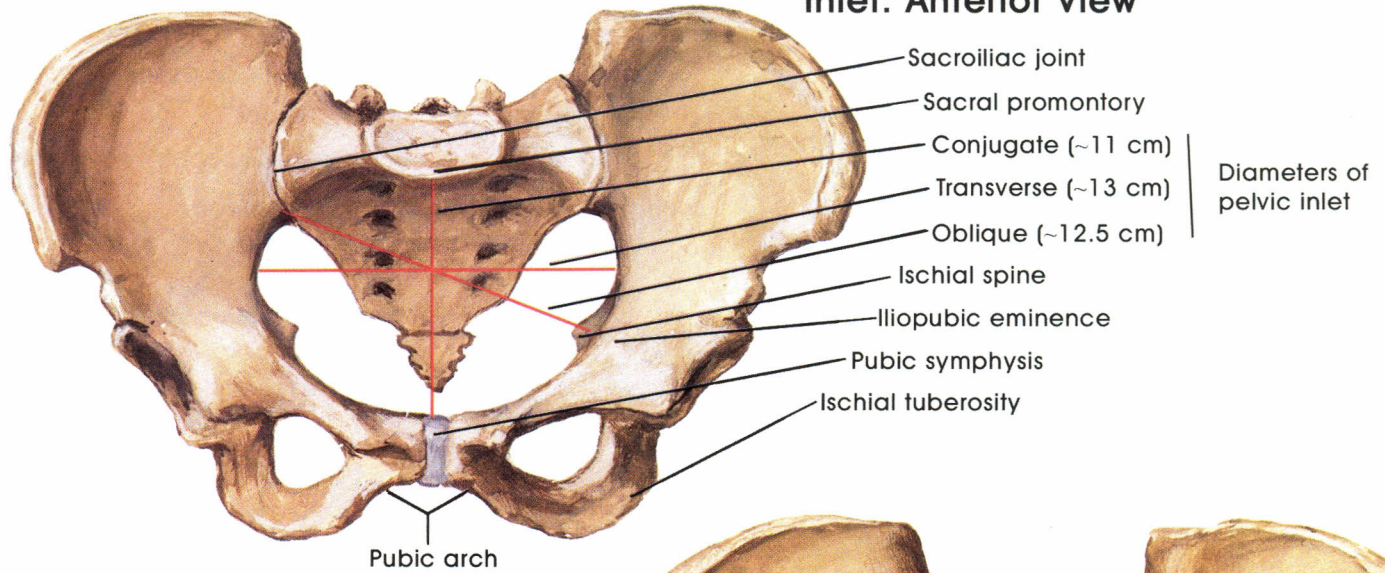
Professor of Anatomy & Embryology

Faculty of Medicine



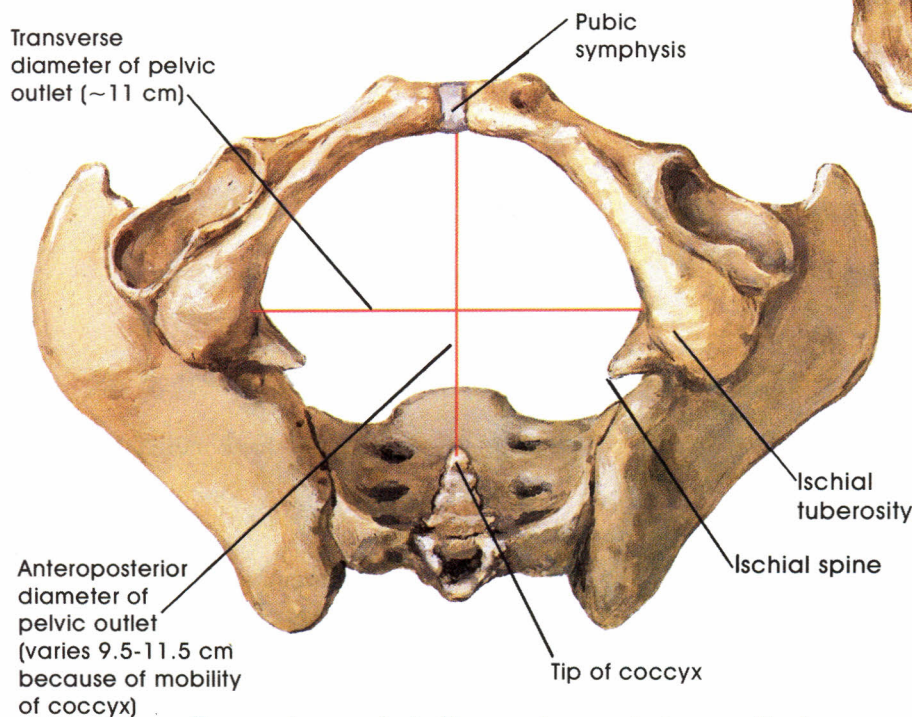
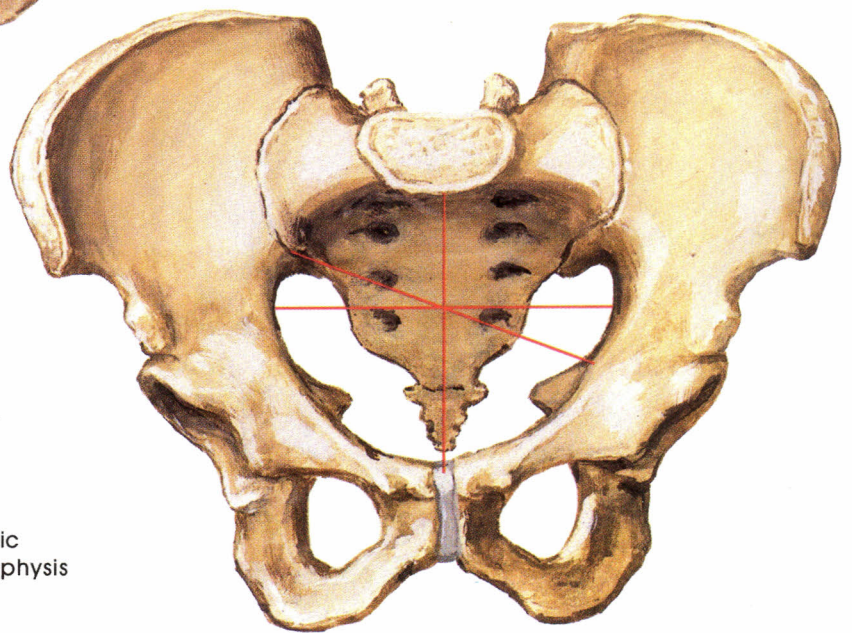
Bony Attachments of Muscles of Hip

Female Pelvis/Female Pelvic Inlet: Anterior View

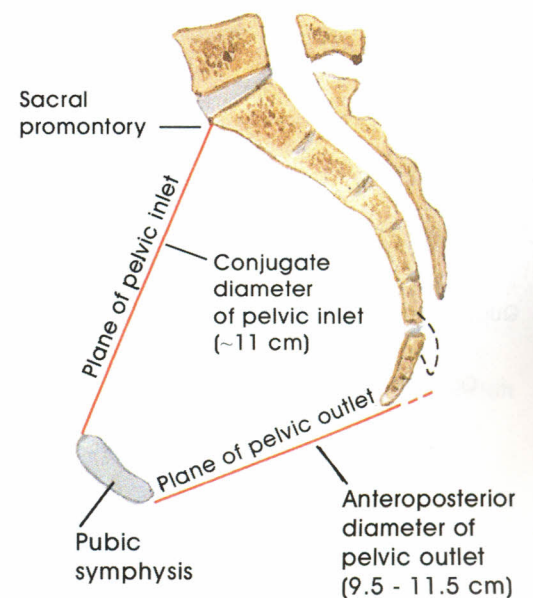


Male Pelvis/Male Pelvic Inlet: Anterior View

All measurements slightly shorter in relation to body size than in female pelvic inlet oriented more antero-posteriorly than in female, where it tends to be transversely oval pubic symphysis deeper (taller) pubic arch (subpubic angle) narrow ischial tuberosities less far apart iliac wings less flared

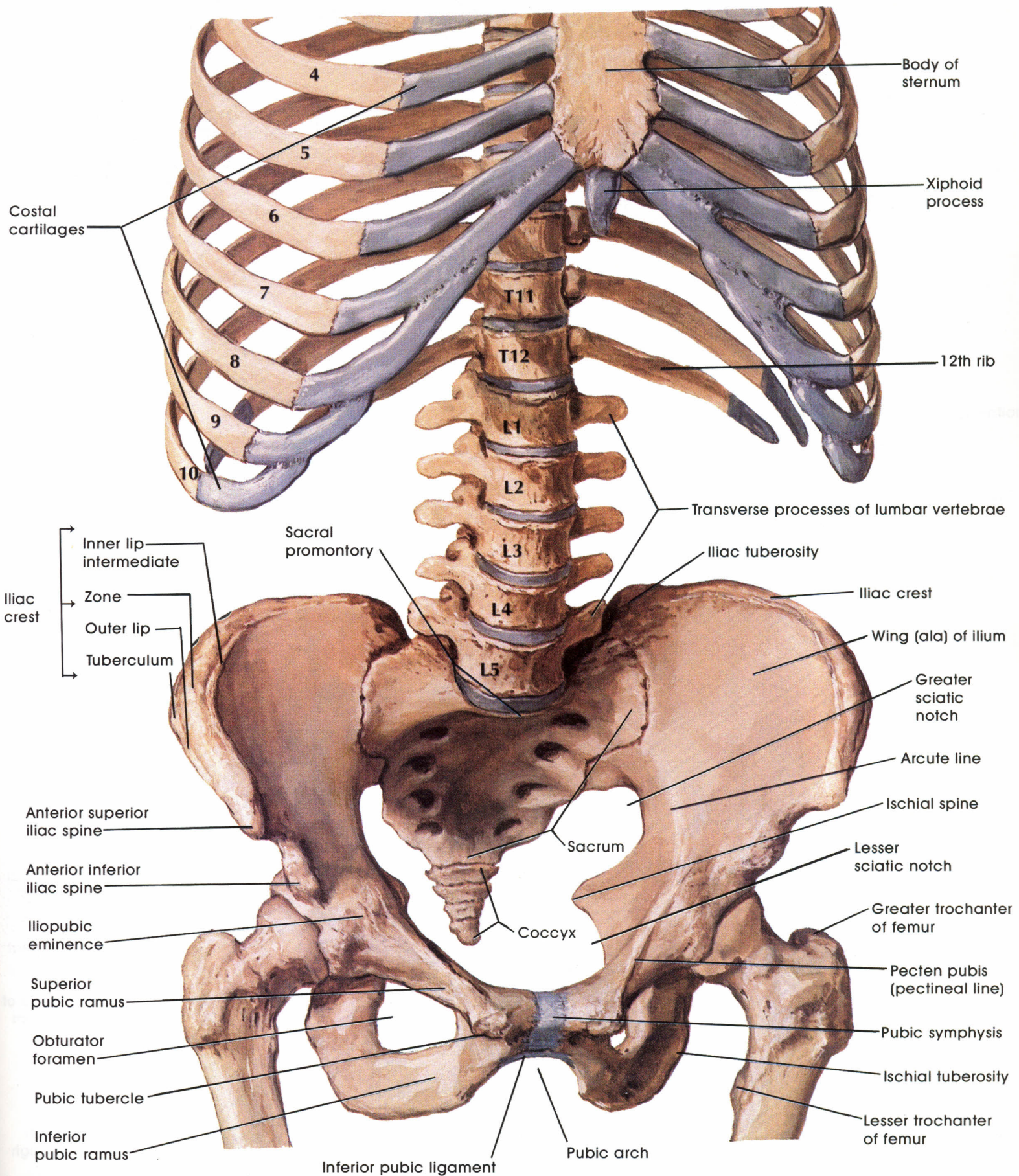


Female pelvis/female pelvic outlet: Inferior View

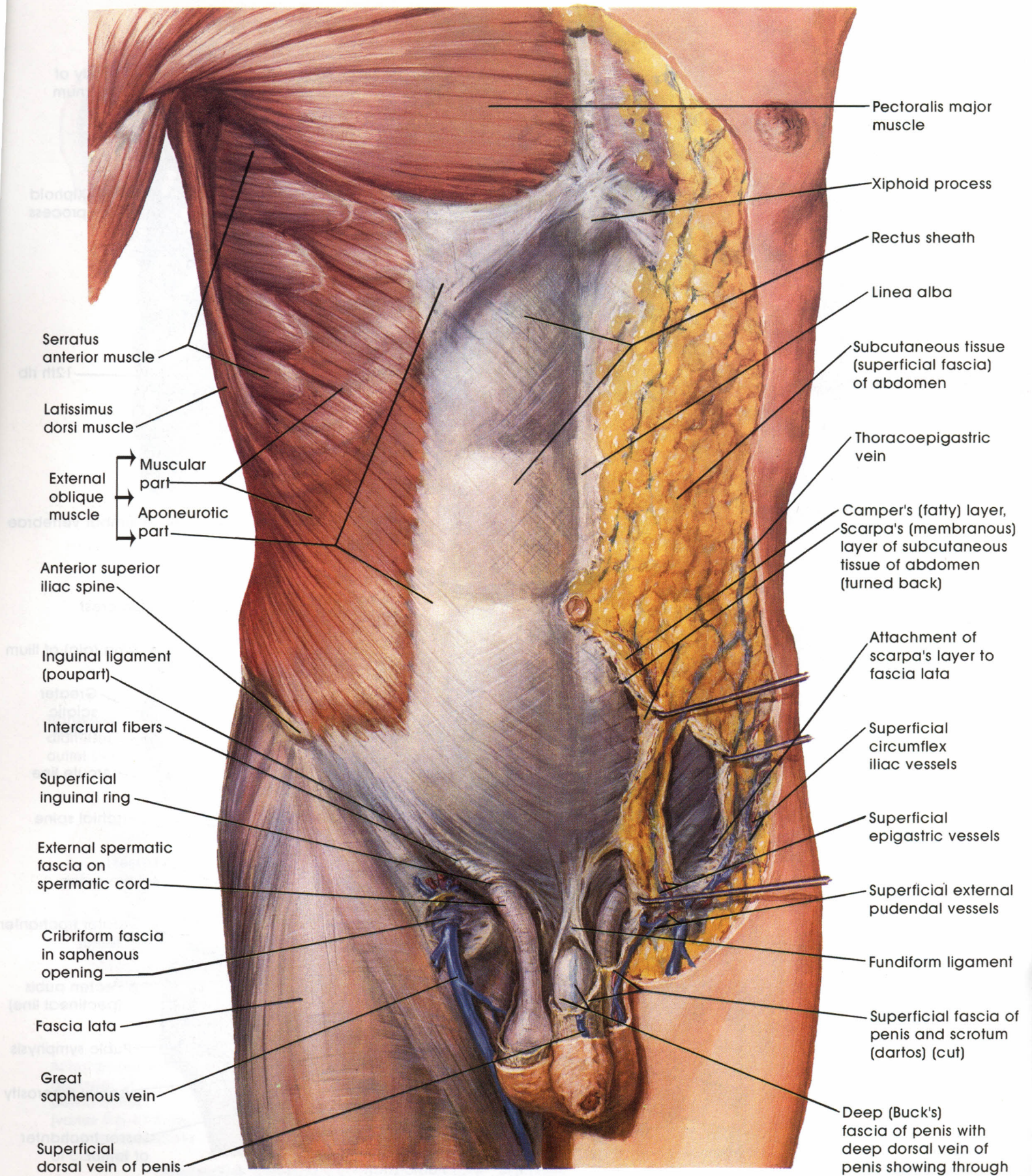


Female: Sagittal Section

Sex Differences of Pelvis: Measurements

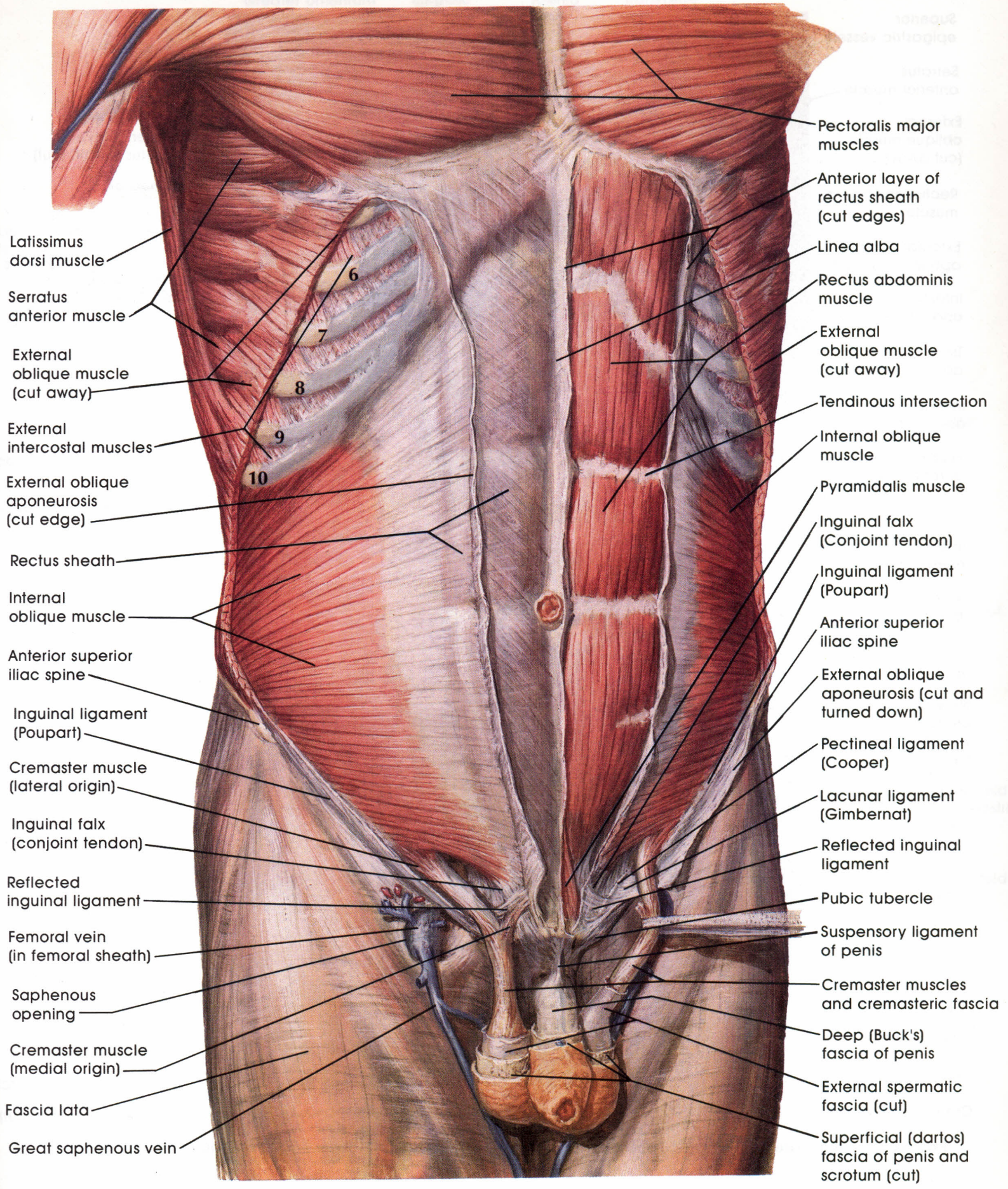


Bony Framework of Abdomen and Pelvis

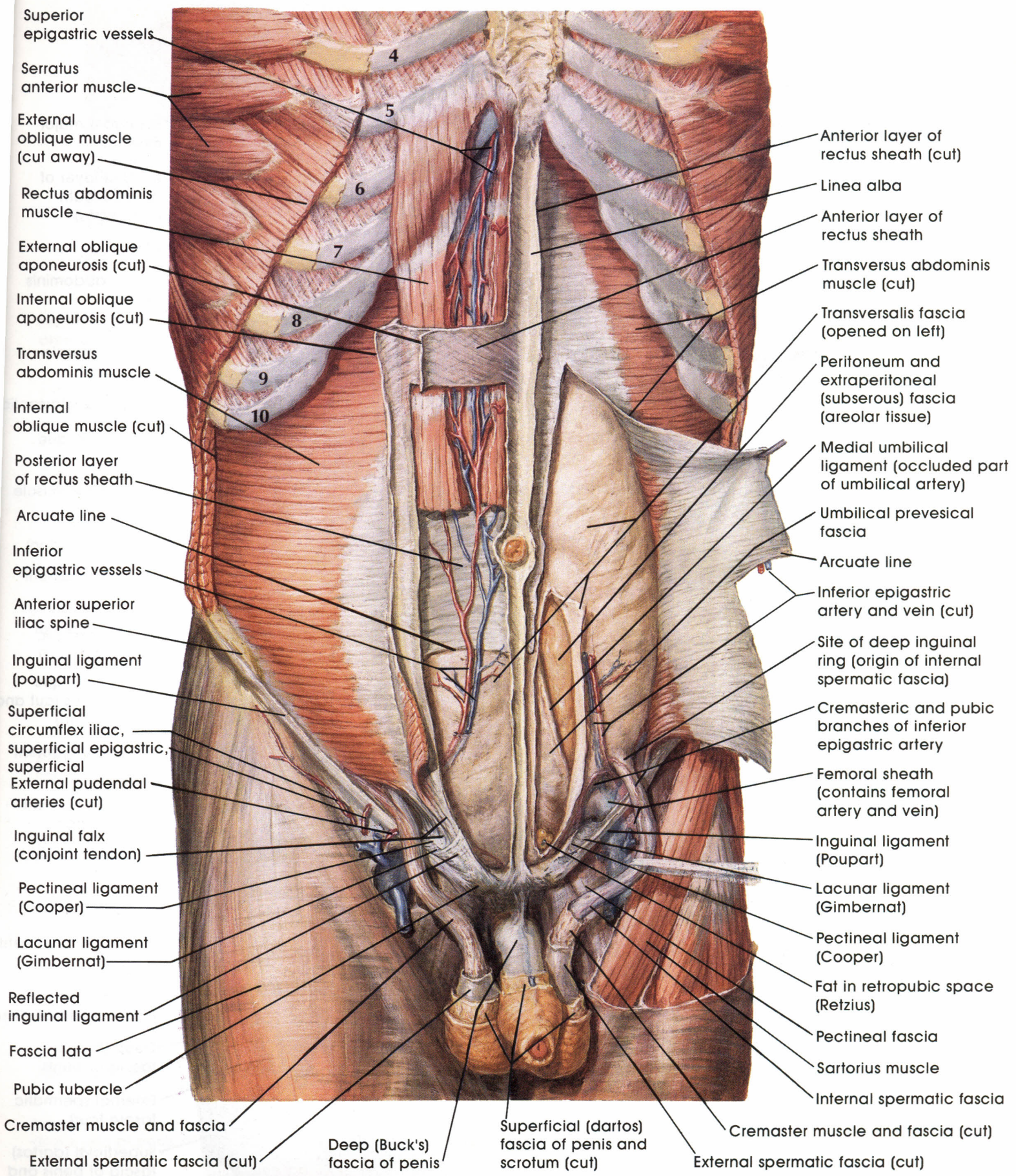


- Pectoralis major muscle
- Xiphoid process
- Rectus sheath
- Linea alba
- Subcutaneous tissue (superficial fascia) of abdomen
- Thoracoepigastric vein
- Camper's (fatty) layer, Scarpa's (membranous) layer of subcutaneous tissue of abdomen (turned back)
- Attachment of Scarpa's layer to fascia lata
- Superficial circumflex iliac vessels
- Superficial epigastric vessels
- Superficial external pudendal vessels
- Fundiform ligament
- Superficial fascia of penis and scrotum (dartos) (cut)
- Deep (Buck's) fascia of penis with deep dorsal vein of penis showing through
- Serratus anterior muscle
- Latissimus dorsi muscle
- External oblique muscle
 - Muscular part
 - Aponeurotic part
- Anterior superior iliac spine
- Inguinal ligament (poupart)
- Intercrural fibers
- Superficial inguinal ring
- External spermatic fascia on spermatic cord
- Cribriform fascia in saphenous opening
- Fascia lata
- Great saphenous vein
- Superficial dorsal vein of penis

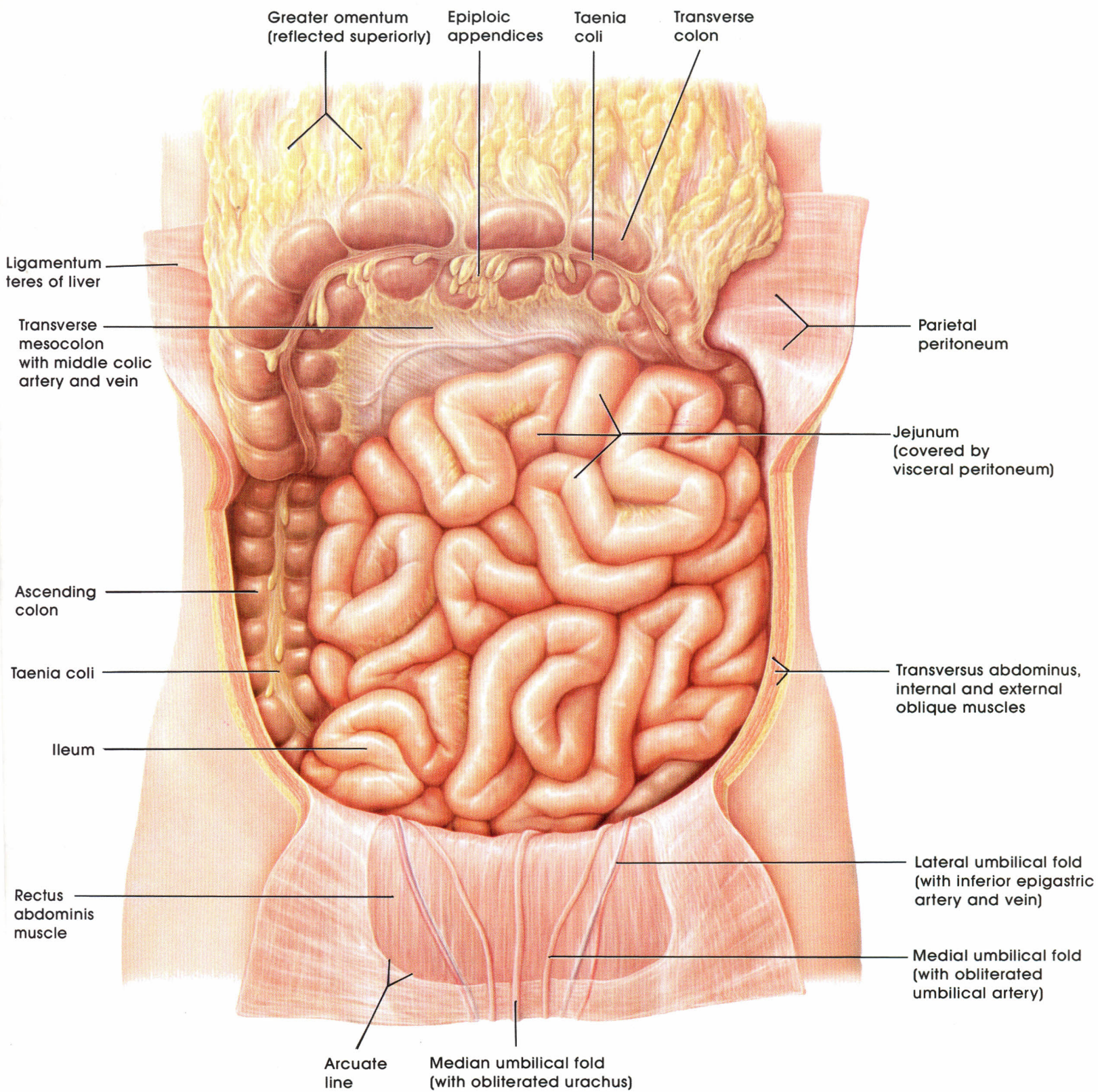
Anterior Abdominal Wall: Superficial Dissection



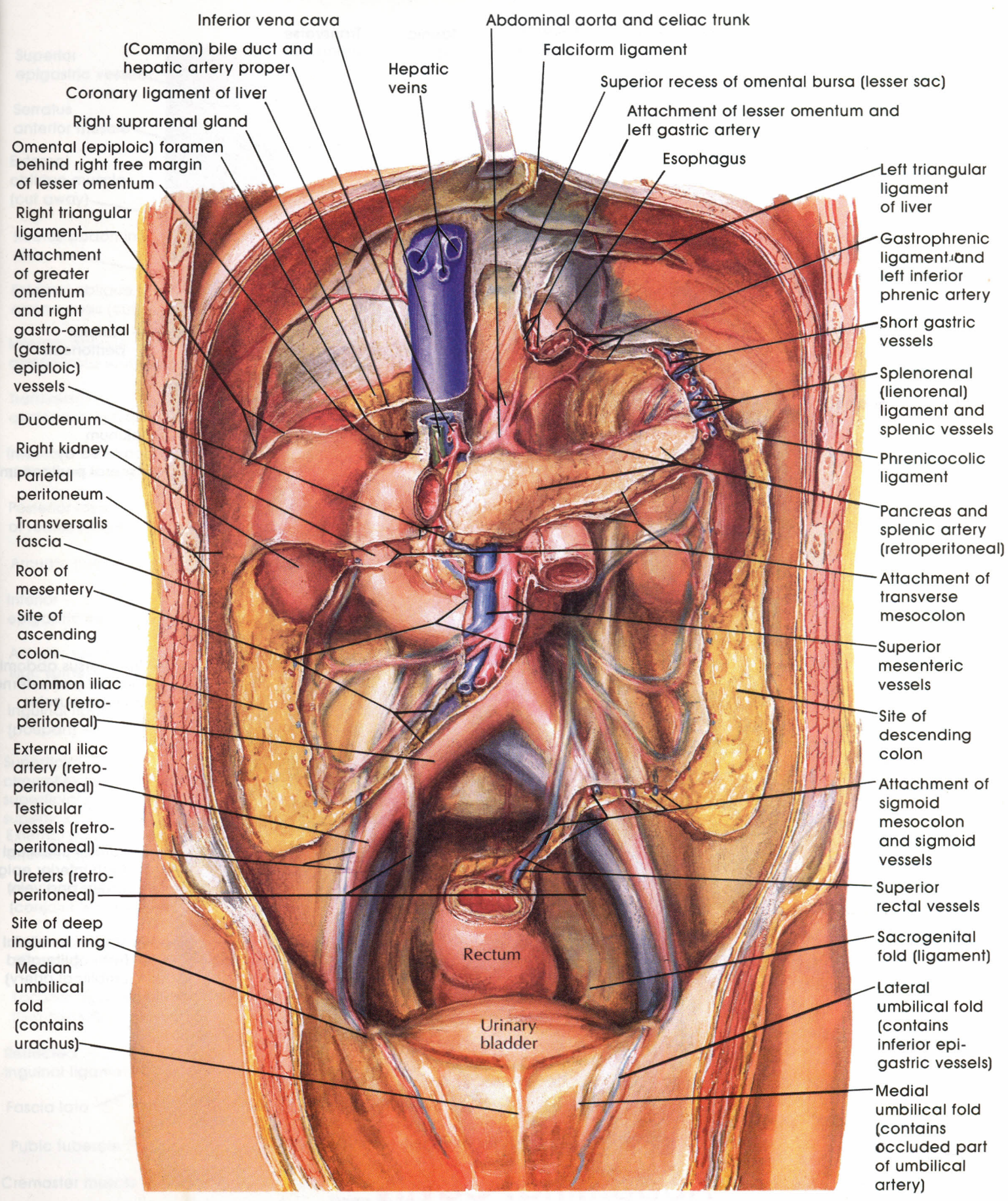
Anterior Abdominal Wall: Intermediate Dissection



Anterior Abdominal Wall: Deep Dissection



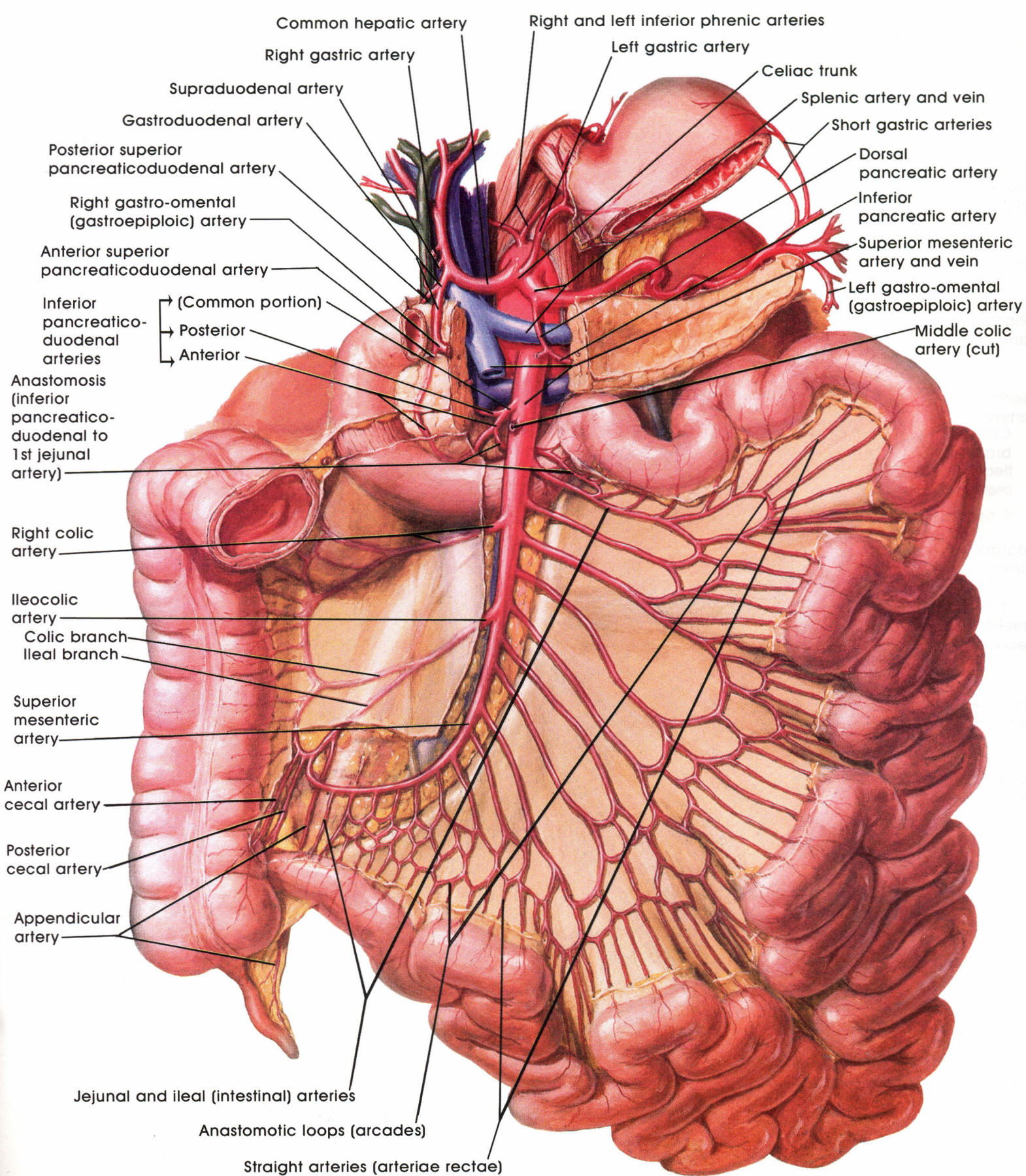
Abdominal Cavity



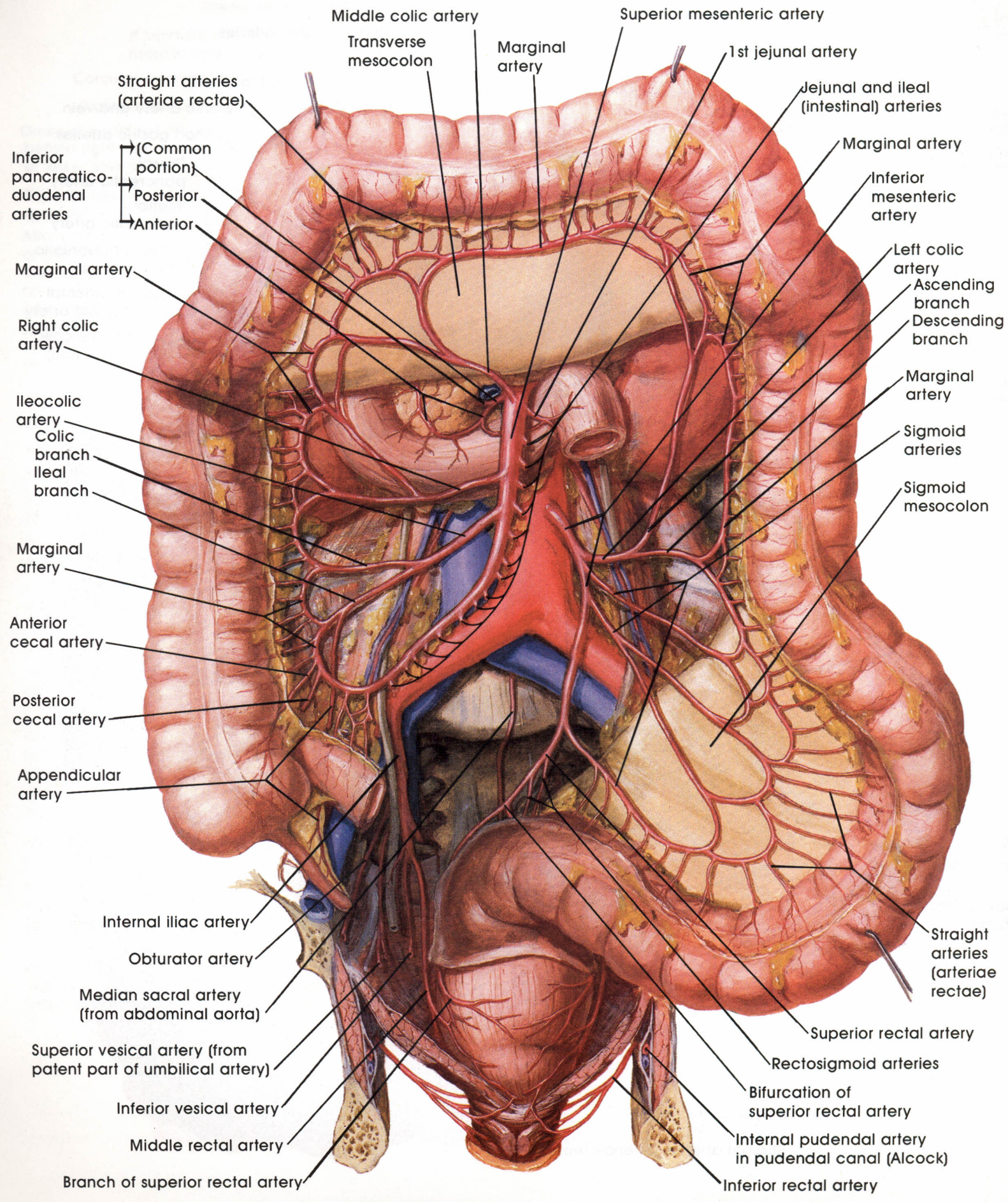
- Inferior vena cava
- Abdominal aorta and celiac trunk
- (Common) bile duct and hepatic artery proper
- Hepatic veins
- Coronary ligament of liver
- Falciform ligament
- Right suprarenal gland
- Superior recess of omental bursa (lesser sac)
- Omental (epiploic) foramen behind right free margin of lesser omentum
- Attachment of lesser omentum and left gastric artery
- Esophagus
- Right triangular ligament
- Left triangular ligament of liver
- Attachment of greater omentum and right gastro-epiploic vessels
- Gastrophrenic ligament and left inferior phrenic artery
- Duodenum
- Short gastric vessels
- Right kidney
- Splenorenal (lienorenal) ligament and splenic vessels
- Parietal peritoneum
- Phrenicocolic ligament
- Transversalis fascia
- Pancreas and splenic artery (retroperitoneal)
- Root of mesentery
- Attachment of transverse mesocolon
- Site of ascending colon
- Superior mesenteric vessels
- Common iliac artery (retroperitoneal)
- Site of descending colon
- External iliac artery (retroperitoneal)
- Attachment of sigmoid mesocolon and sigmoid vessels
- Testicular vessels (retroperitoneal)
- Superior rectal vessels
- Ureters (retroperitoneal)
- Sacrogenital fold (ligament)
- Site of deep inguinal ring
- Lateral umbilical fold (contains inferior epi-gastric vessels)
- Median umbilical fold (contains urachus)
- Rectum
- Urinary bladder
- Medial umbilical fold (contains occluded part of umbilical artery)

Peritoneum of posterior Abdominal Wall

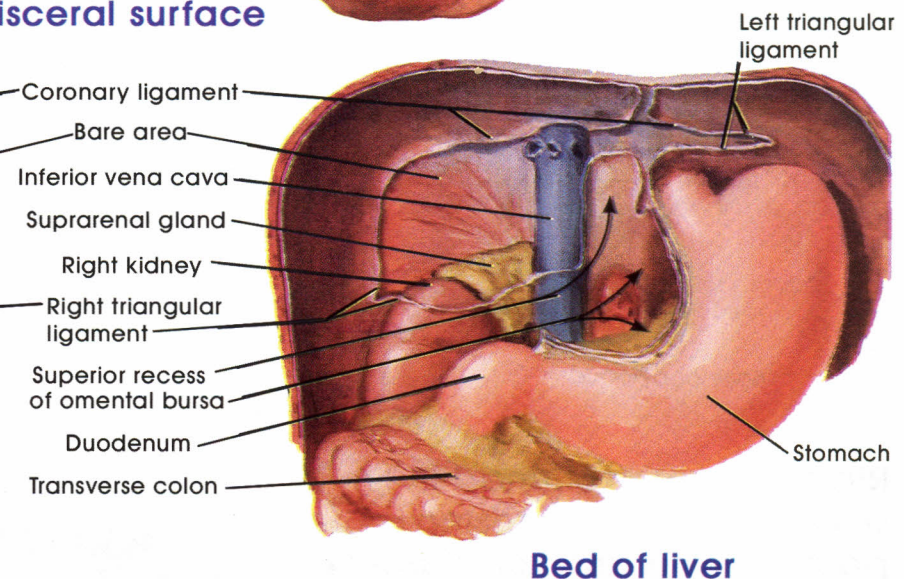
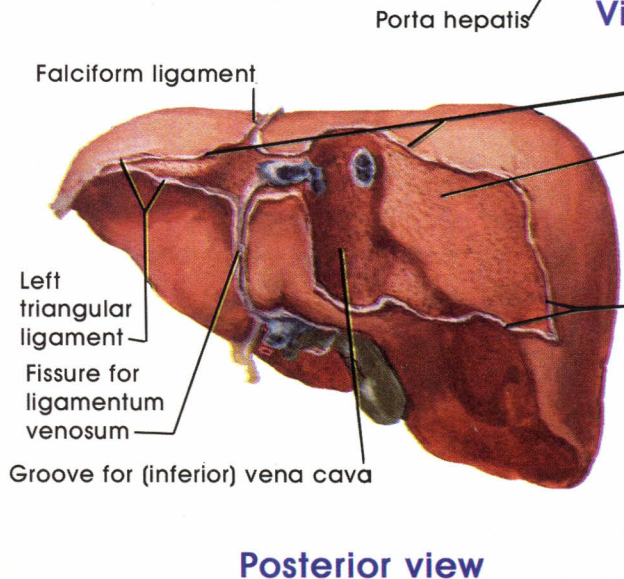
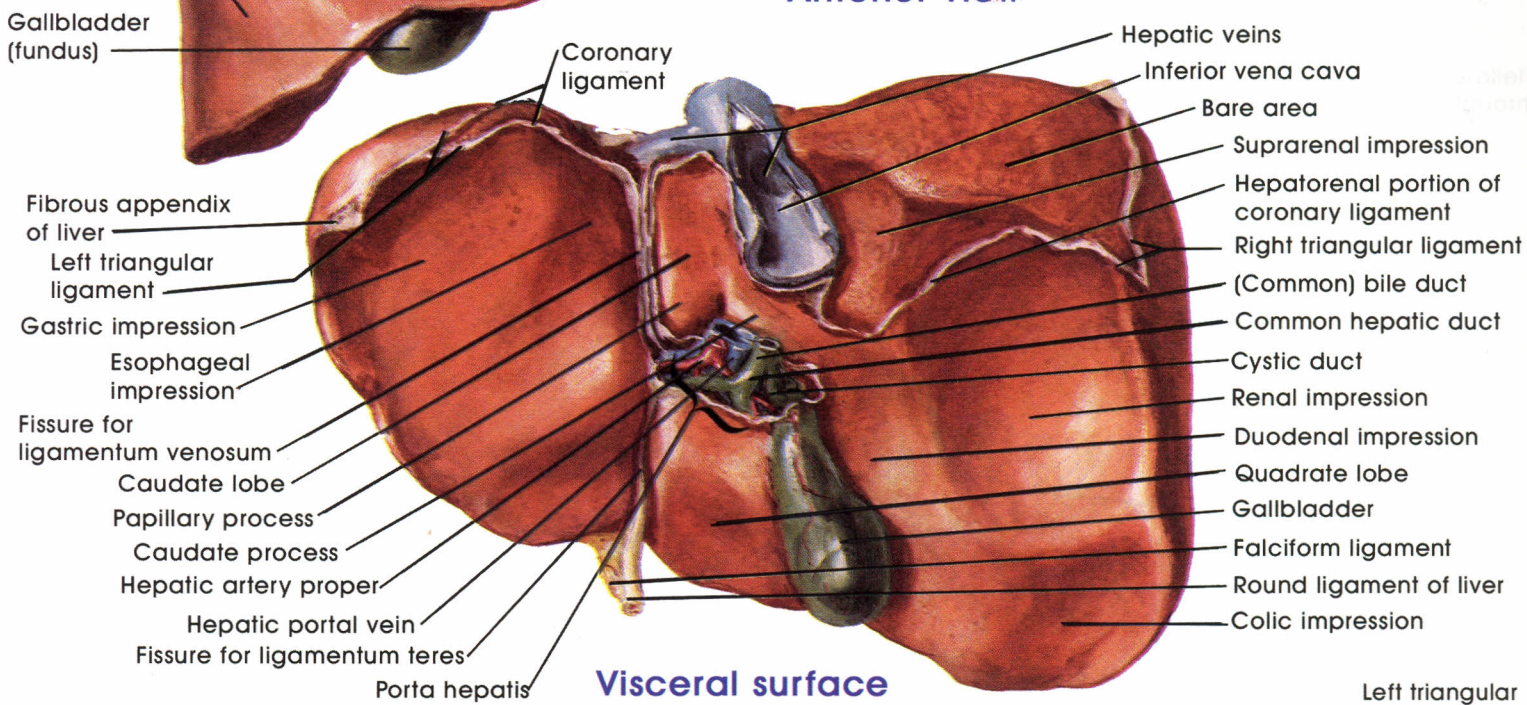
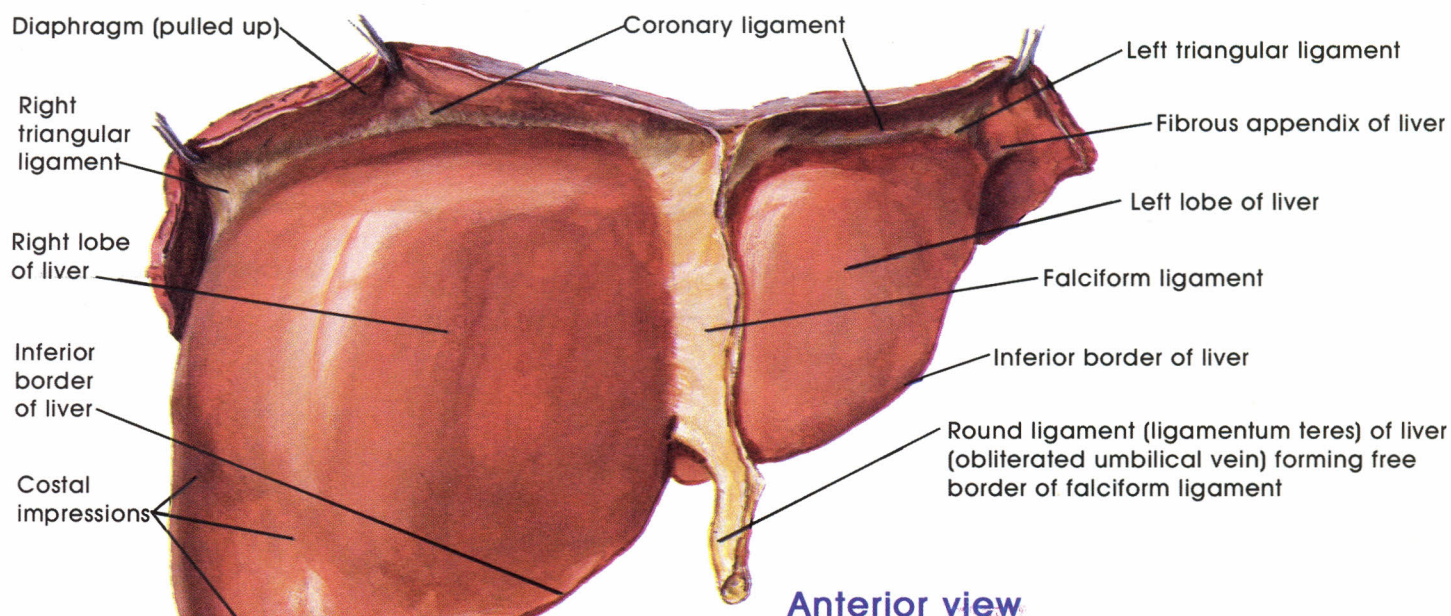
Anterior Abdominal Wall - Deep Dissection



Arteries of Small Intestine

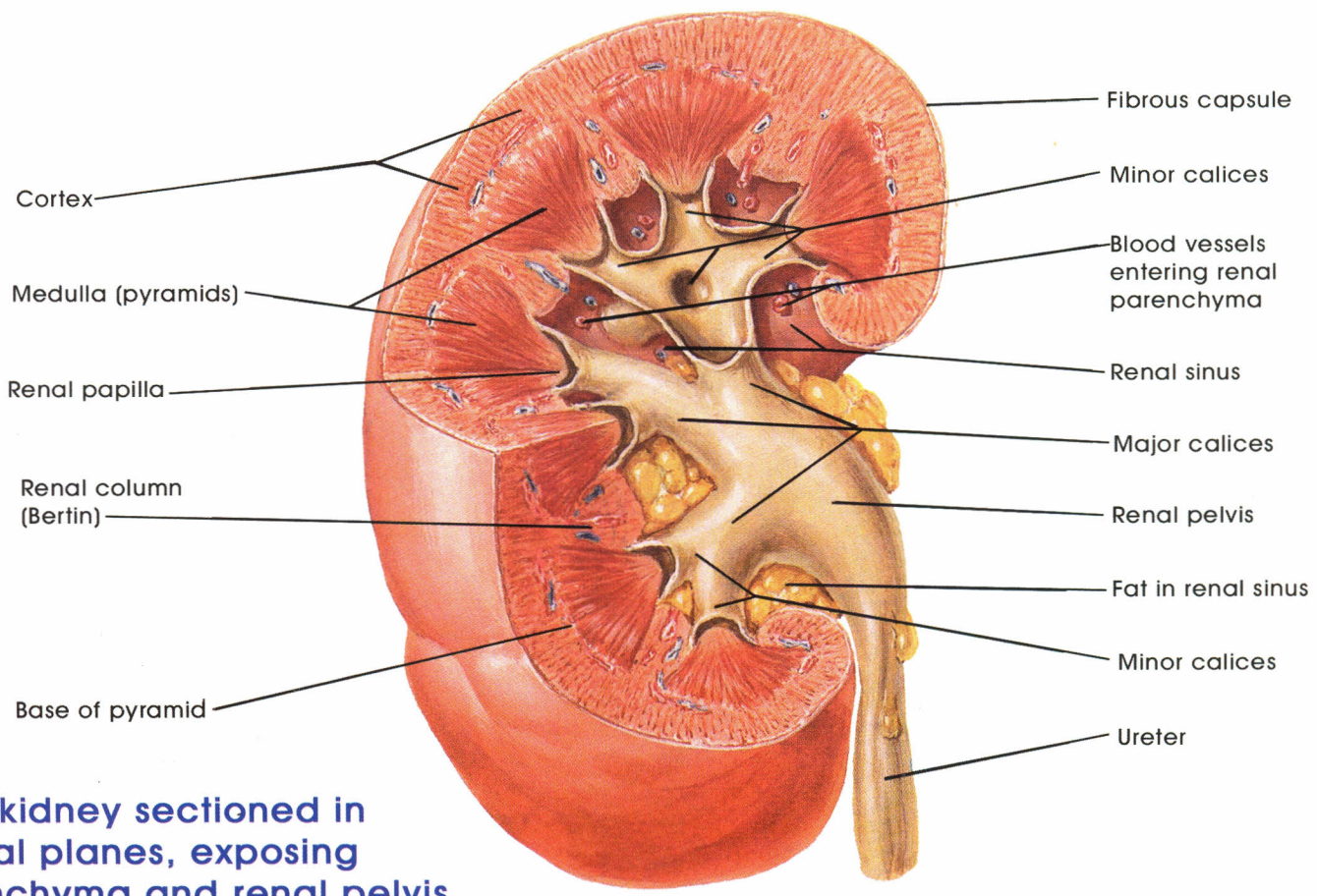
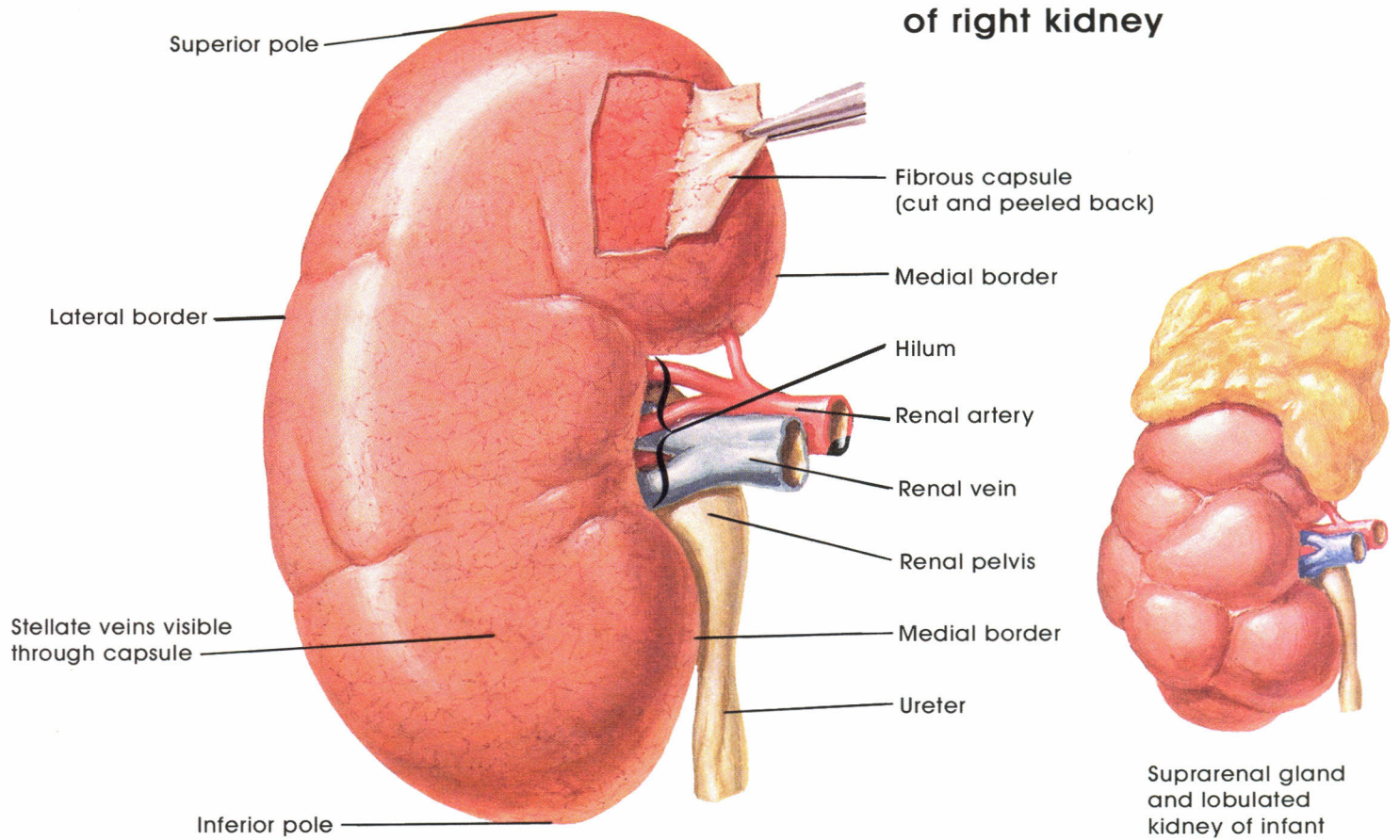


Arteries of Large Intestine



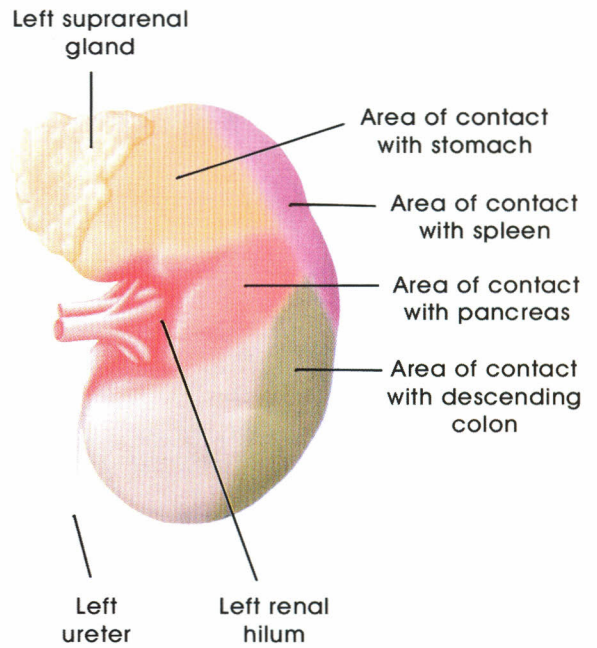
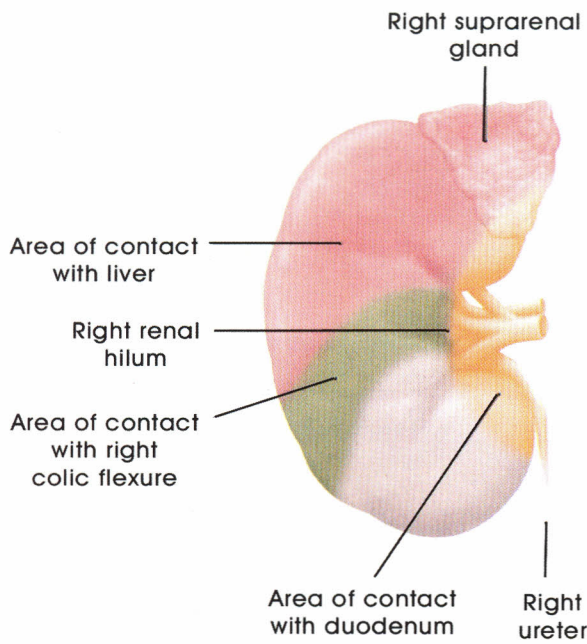
Surfaces and Bed of liver

Anterior surface of right kidney

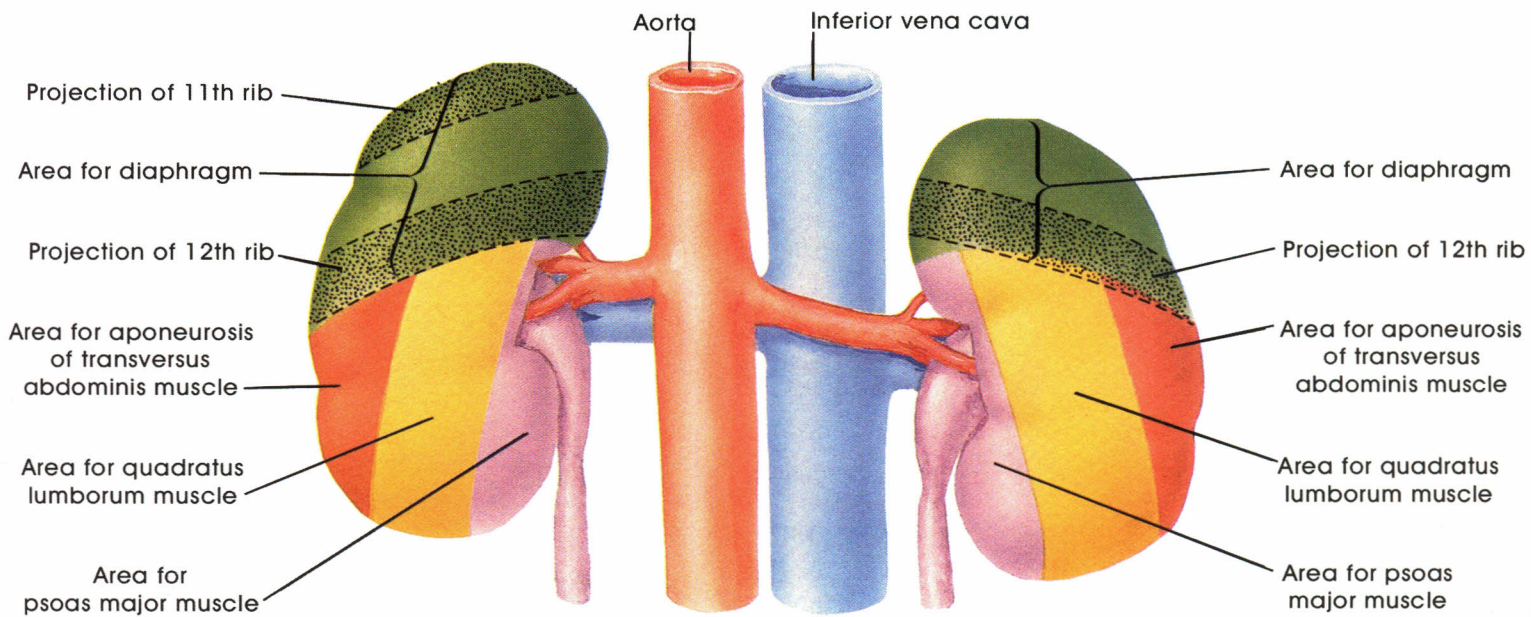


Right kidney sectioned in several planes, exposing parenchyma and renal pelvis

Gross Structure of Kidney

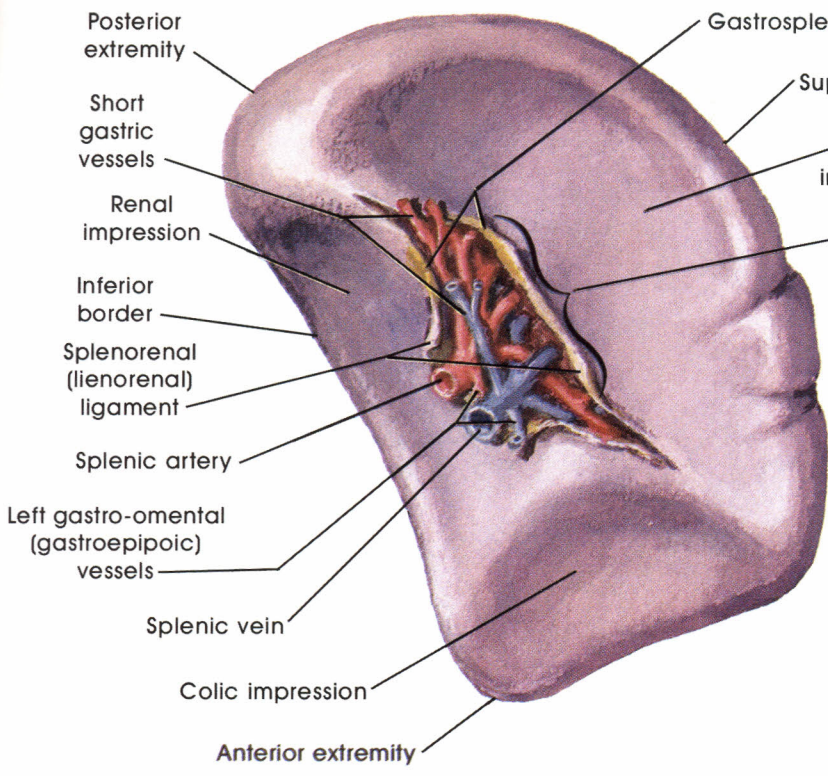


Anterior Relations of Kidneys

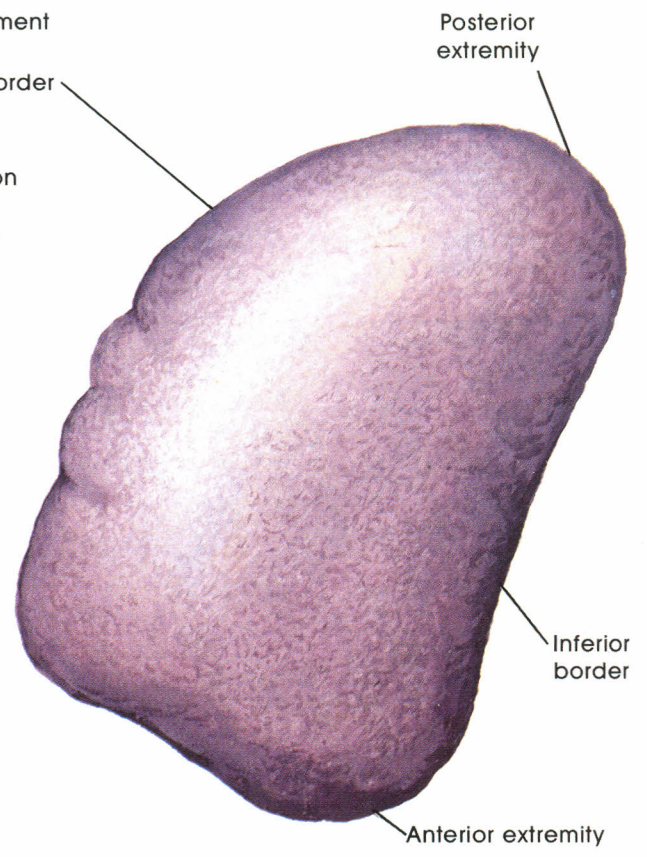


Posterior relations of kidneys

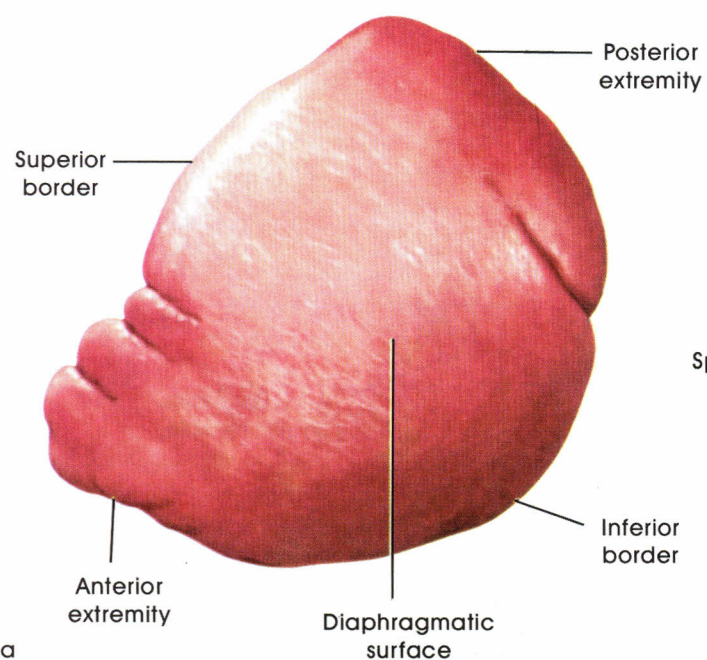
Relations of the Kidney



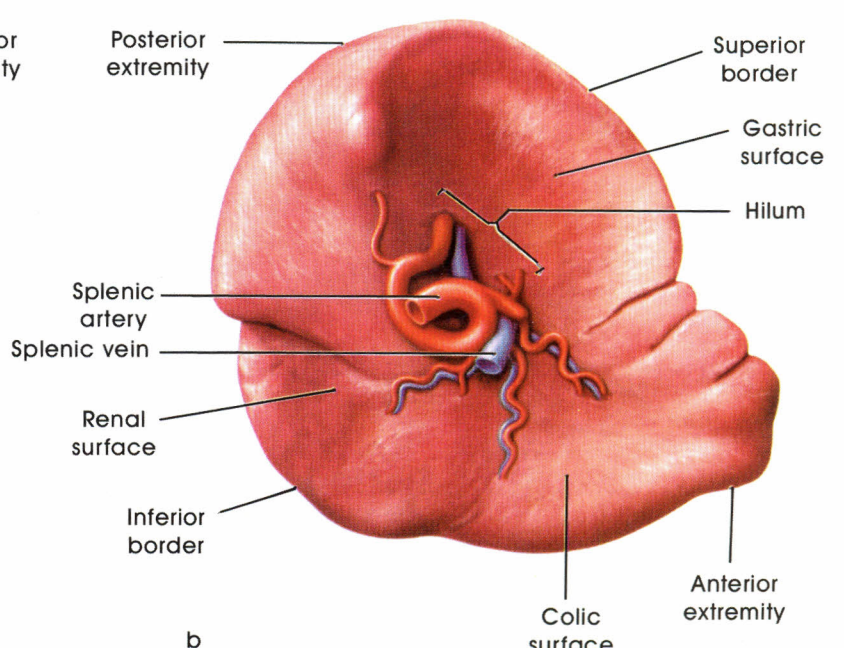
Visceral surface



Diaphragmatic surface

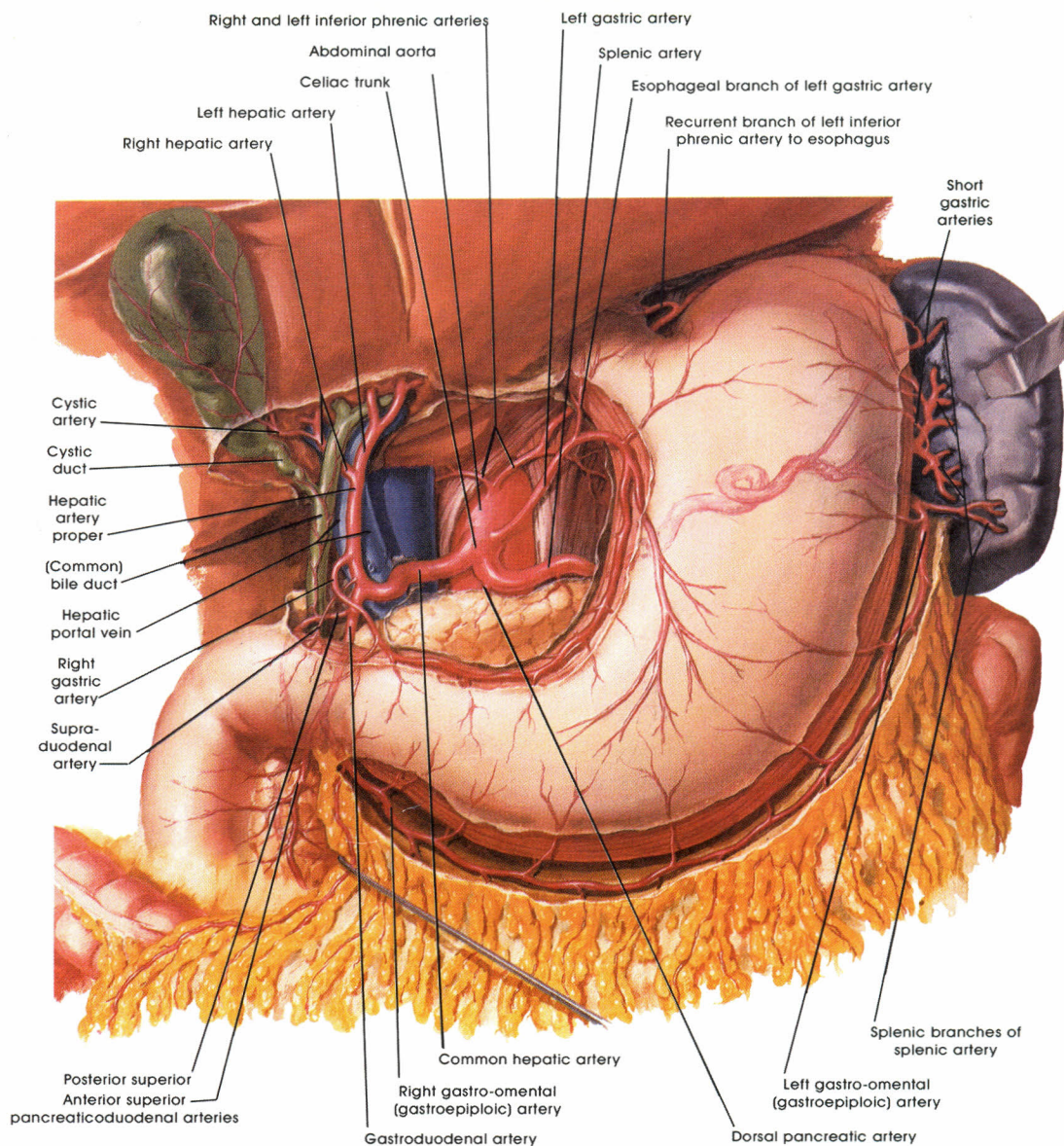


Diaphragmatic Surface

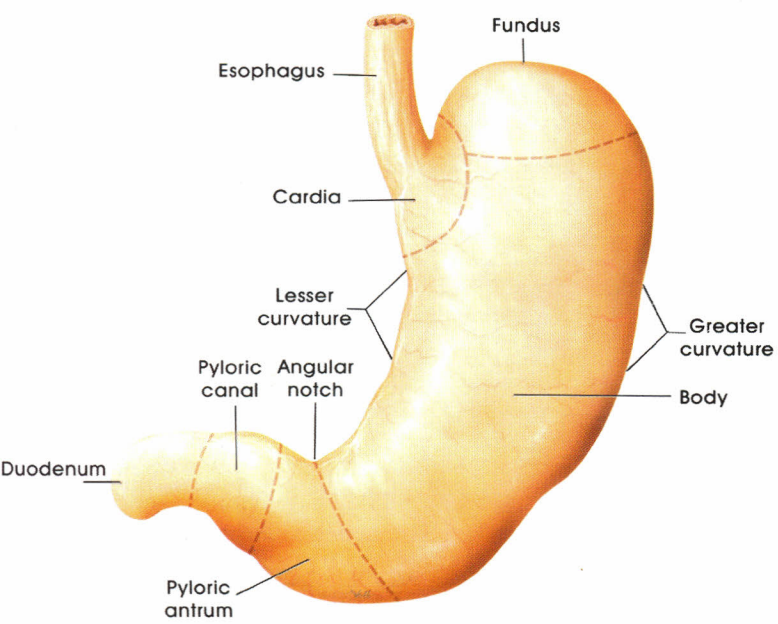


Visceral Surface

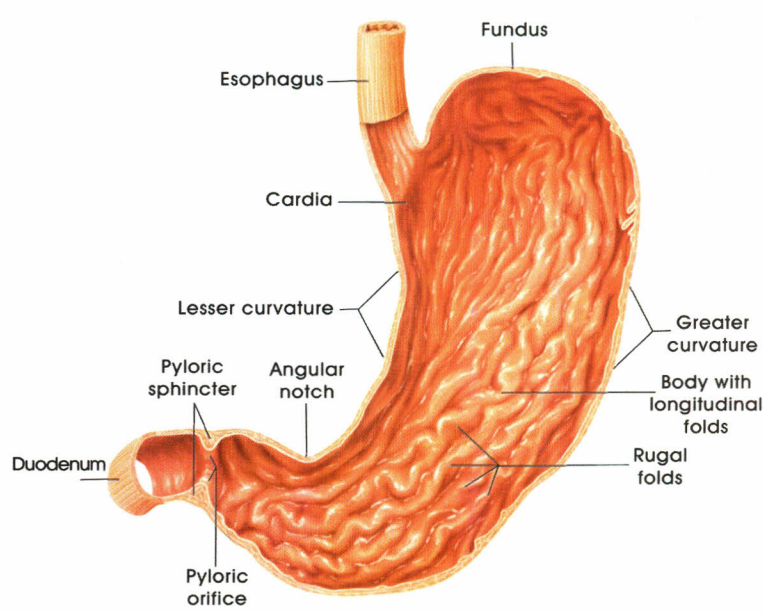
Spleen



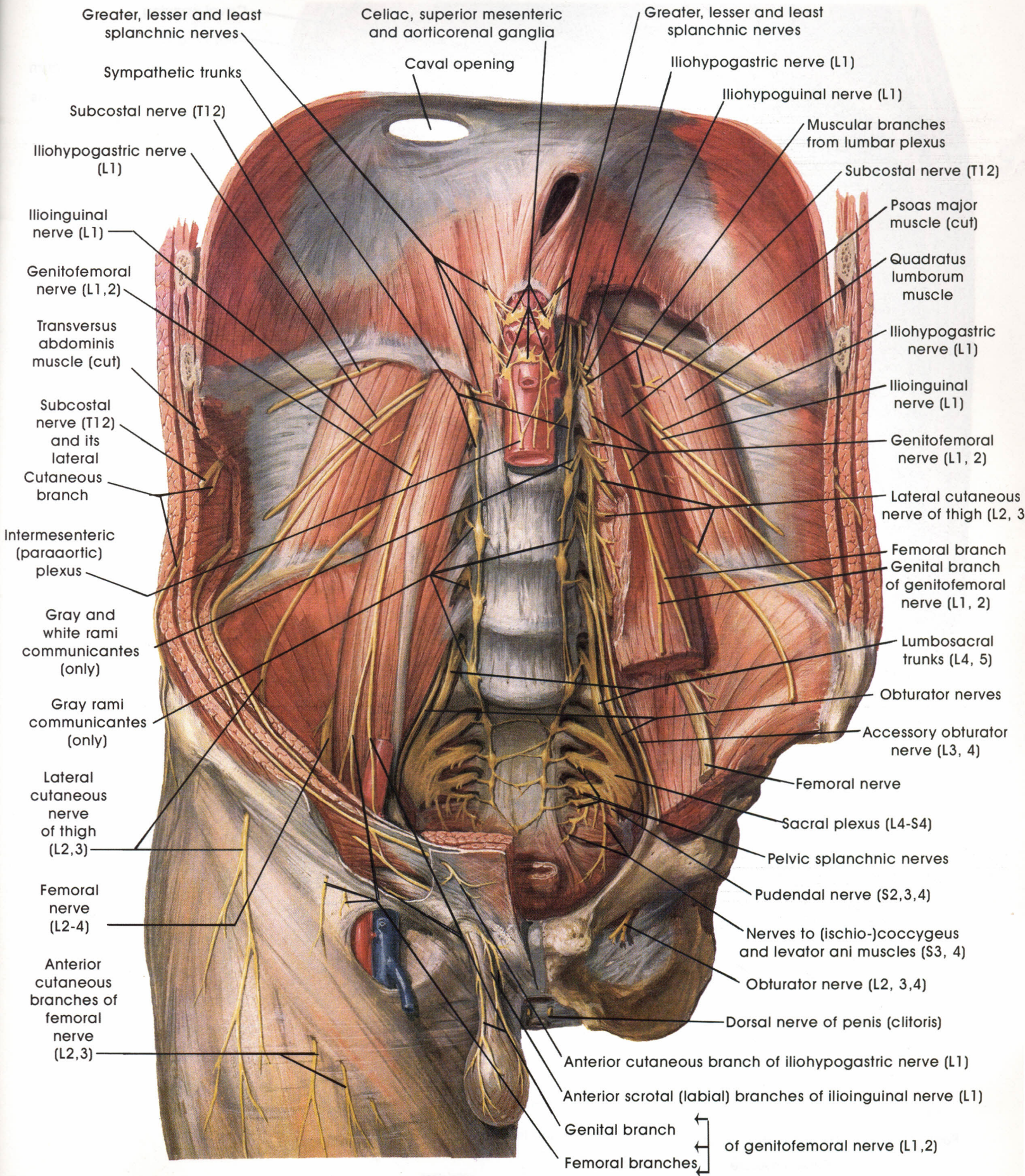
Arteries of Stomach, Liver and Spleen



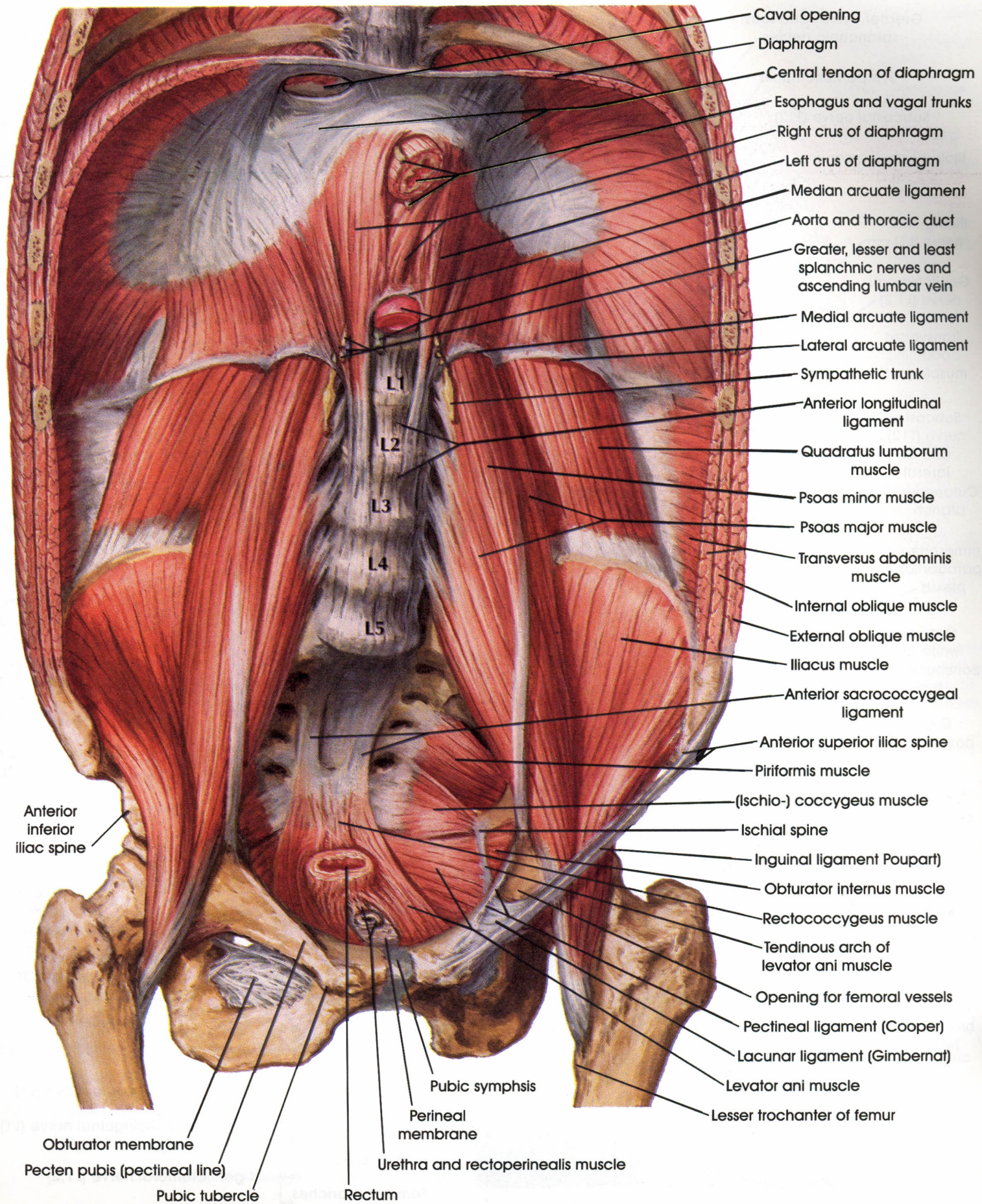
Stomach:



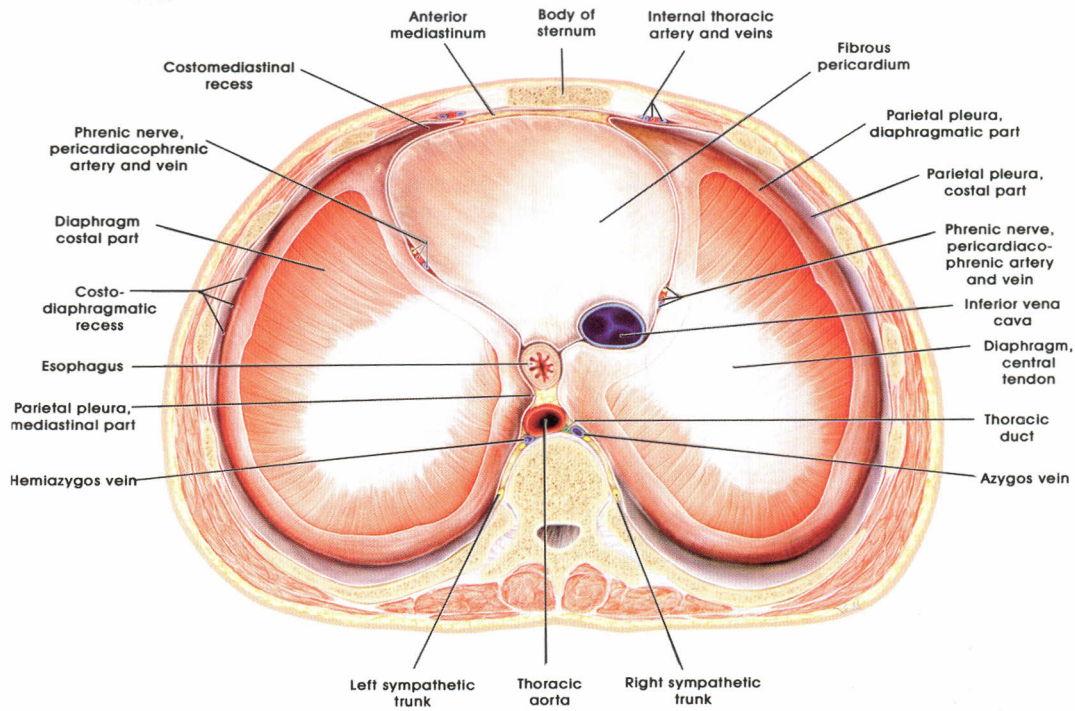
Interior of The Stomach



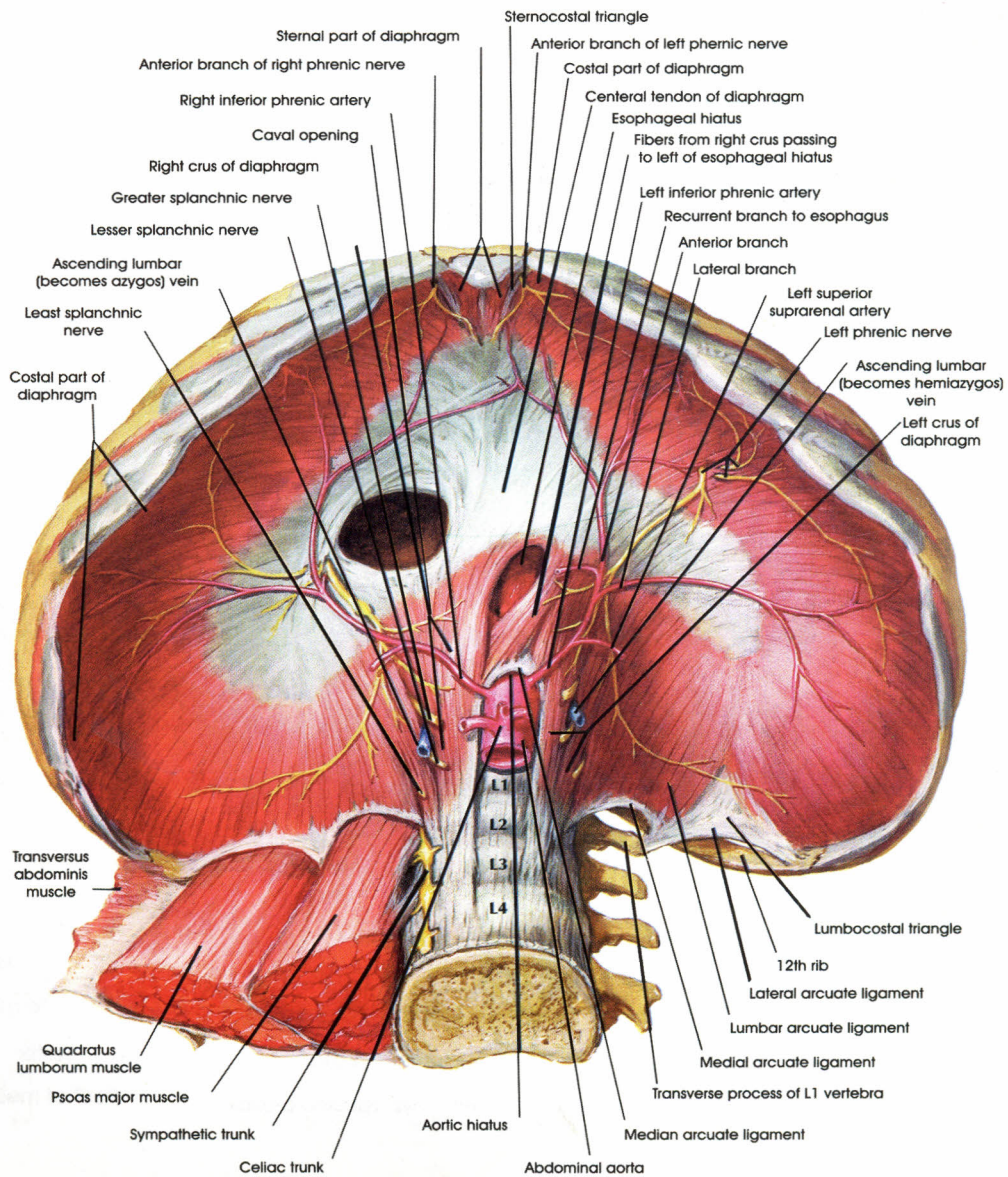
Nerves of Posterior Abdominal Wall



posterior Abdominal Wall: Internal View

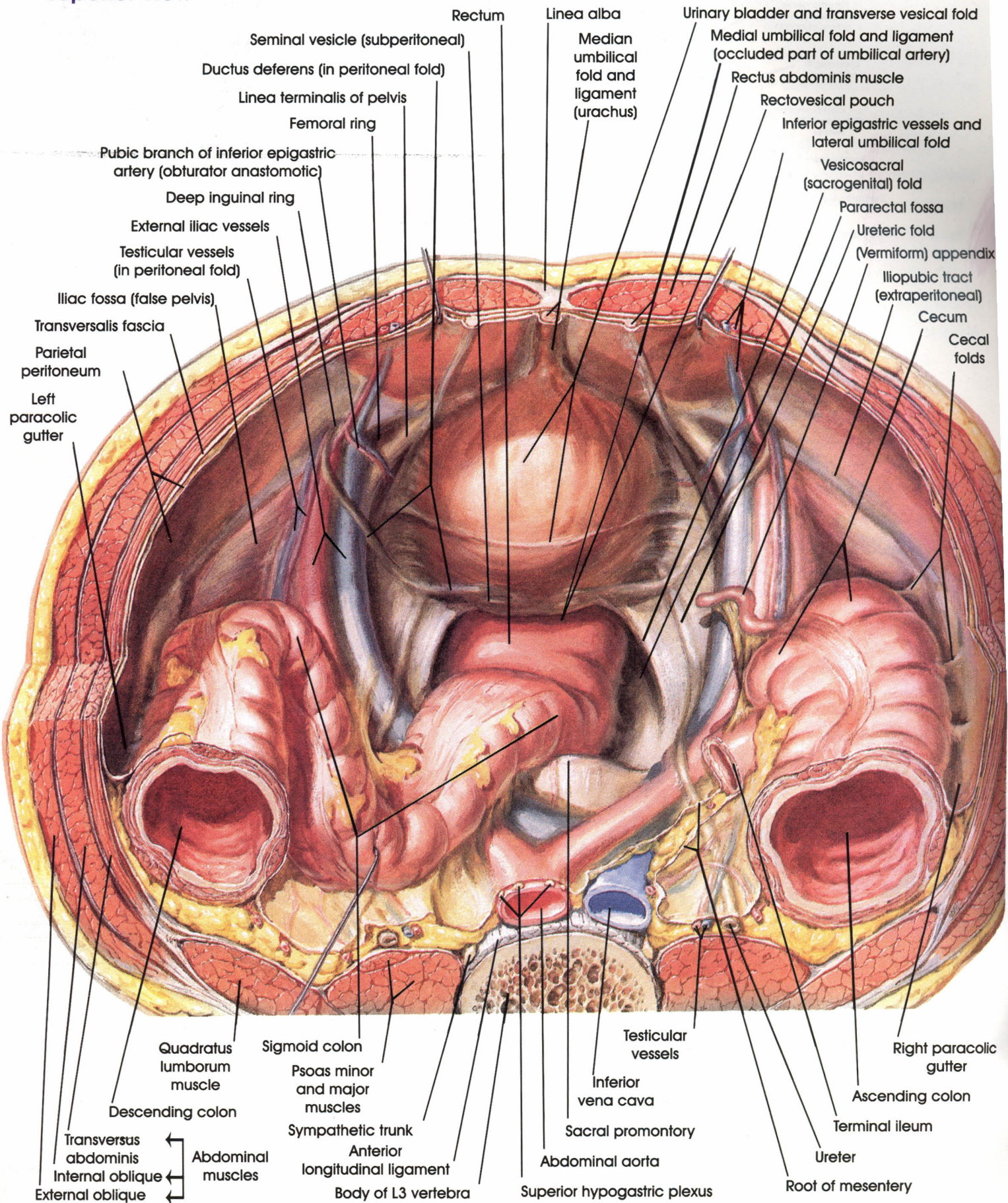


Diaphragm : Thoracic Surface



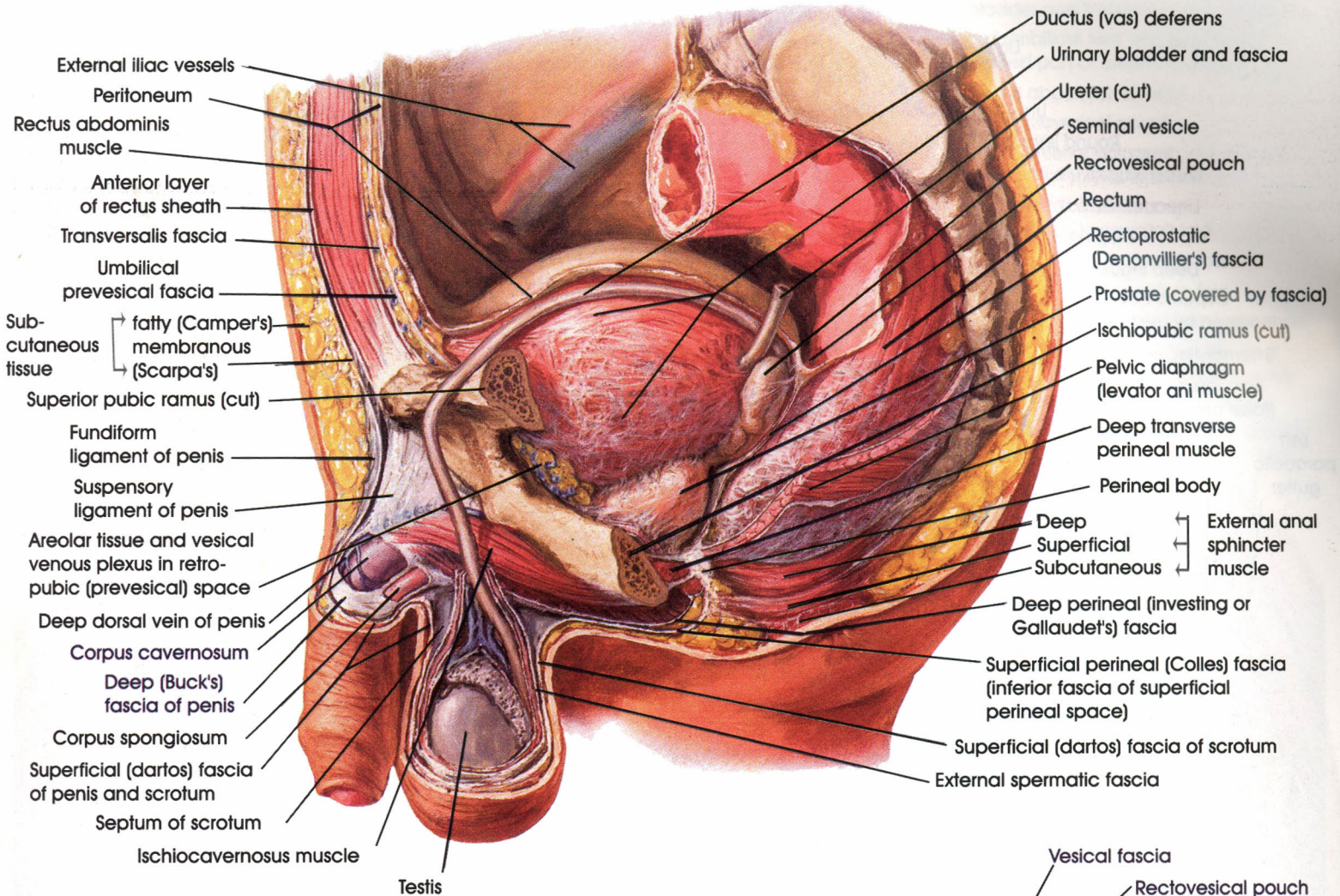
Diaphragm: Abdominal surface

Superior view

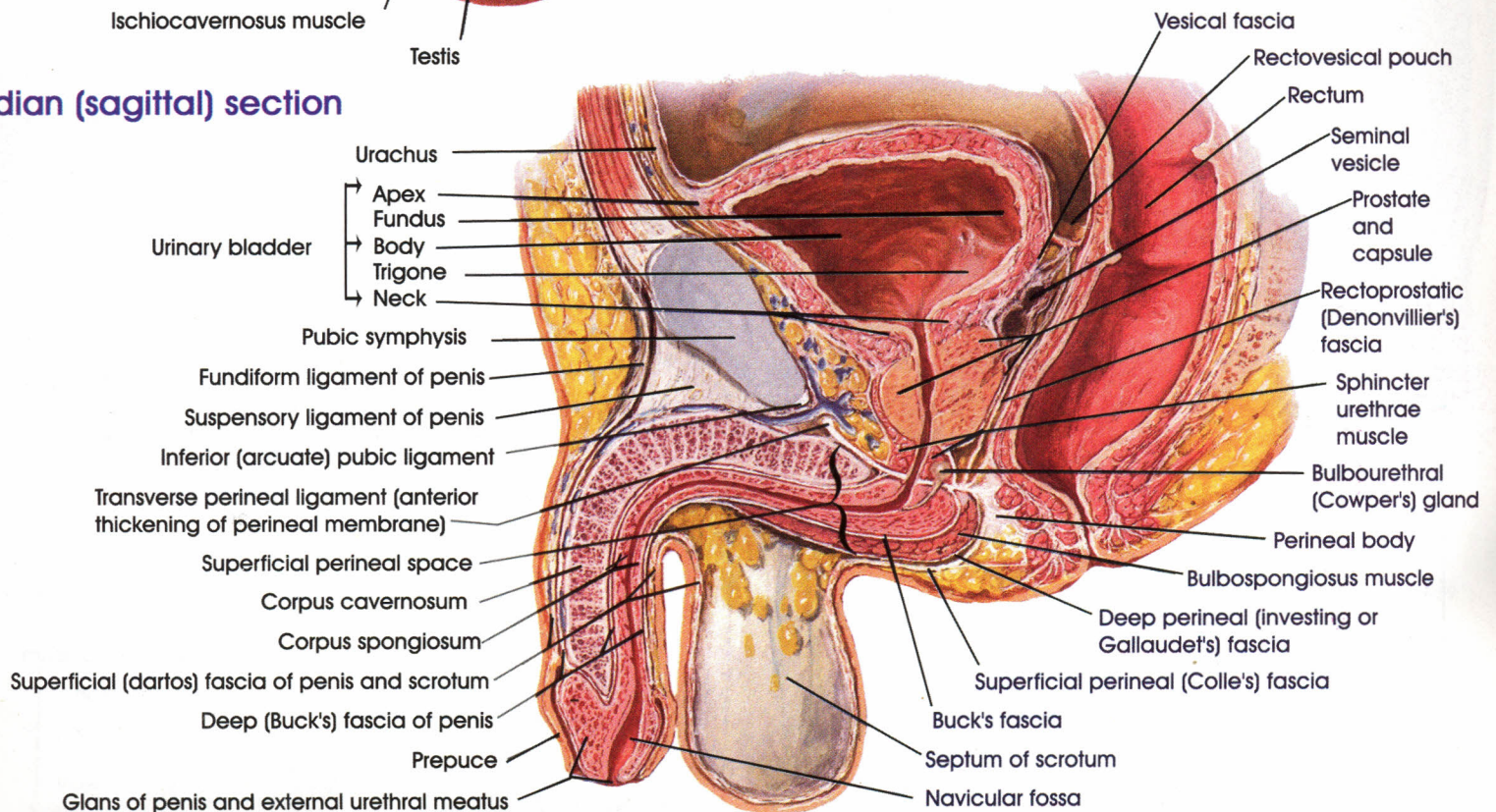


Pelvic Contents: Male

Paramedian (sagittal) dissection

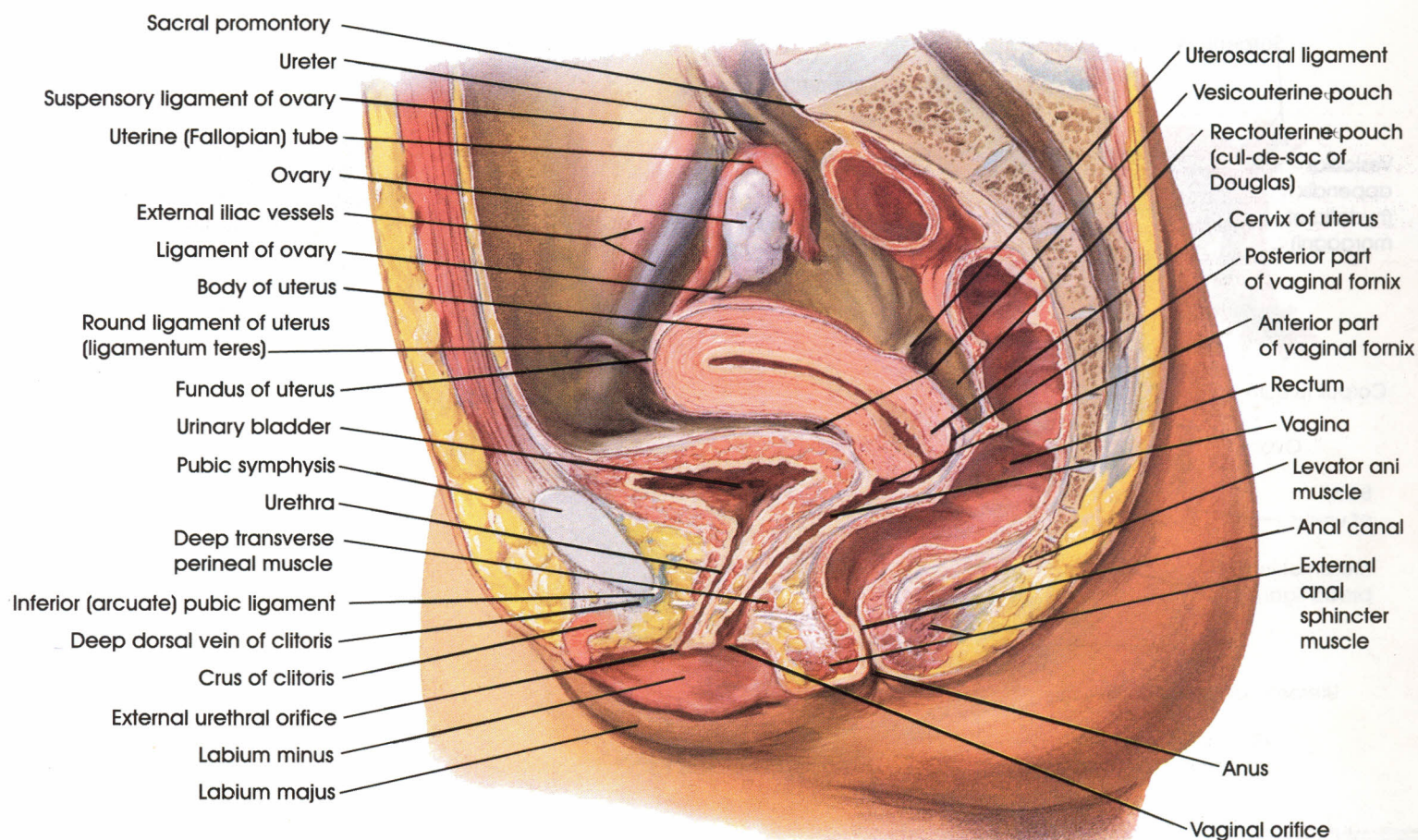


Median (sagittal) section

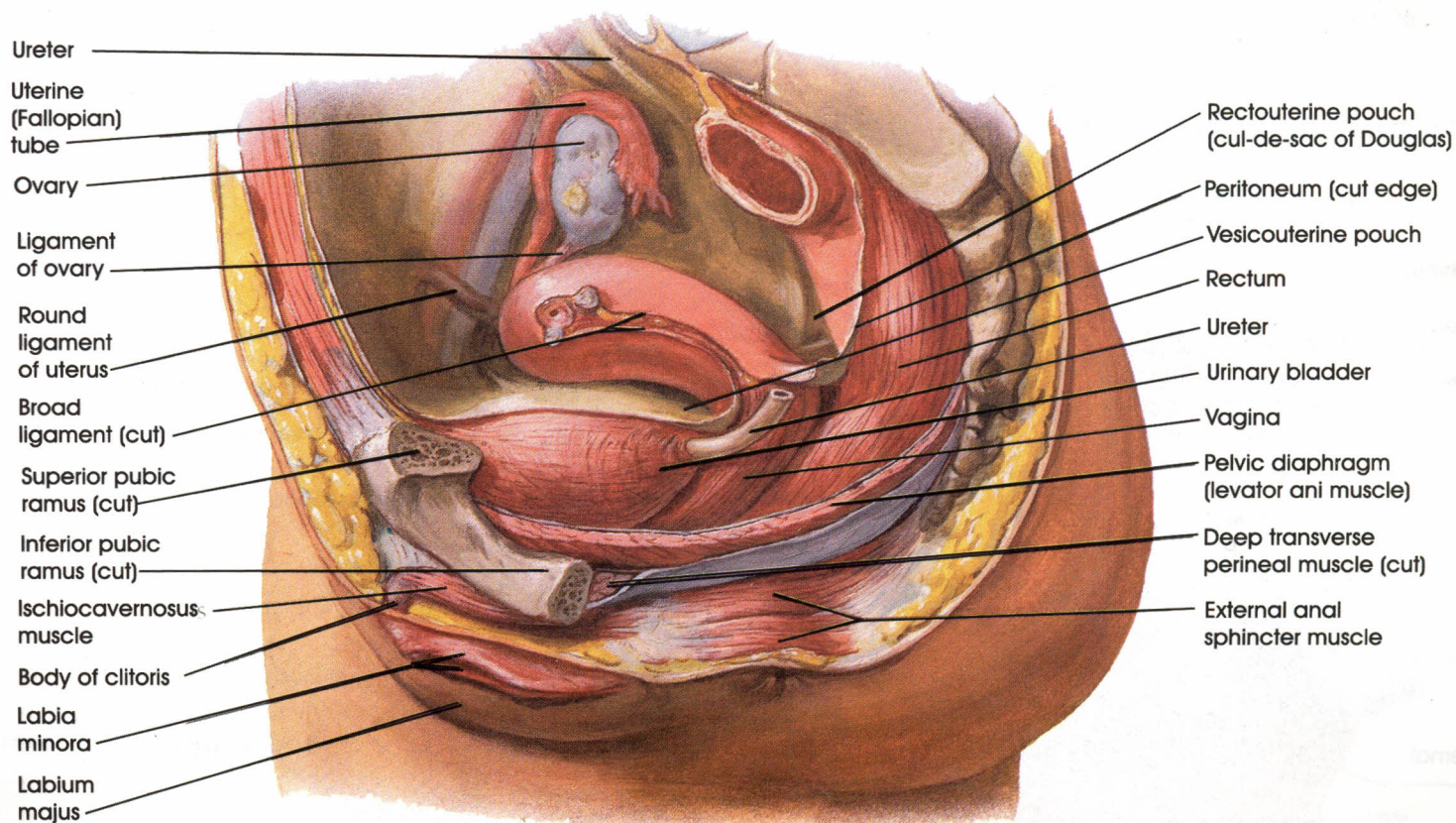


Pelvic Viscera and Perineum : Male

Median (sagittal) section

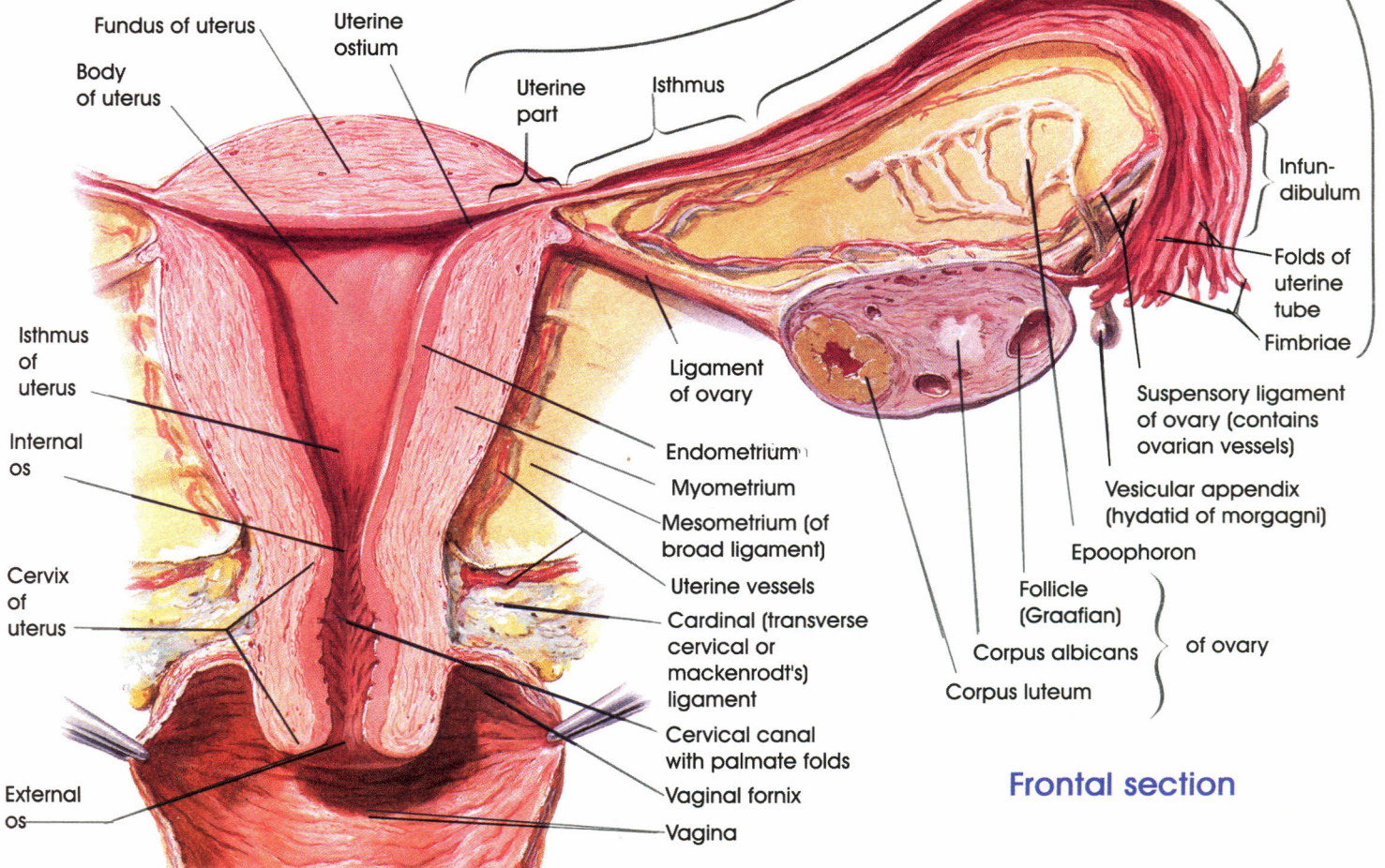
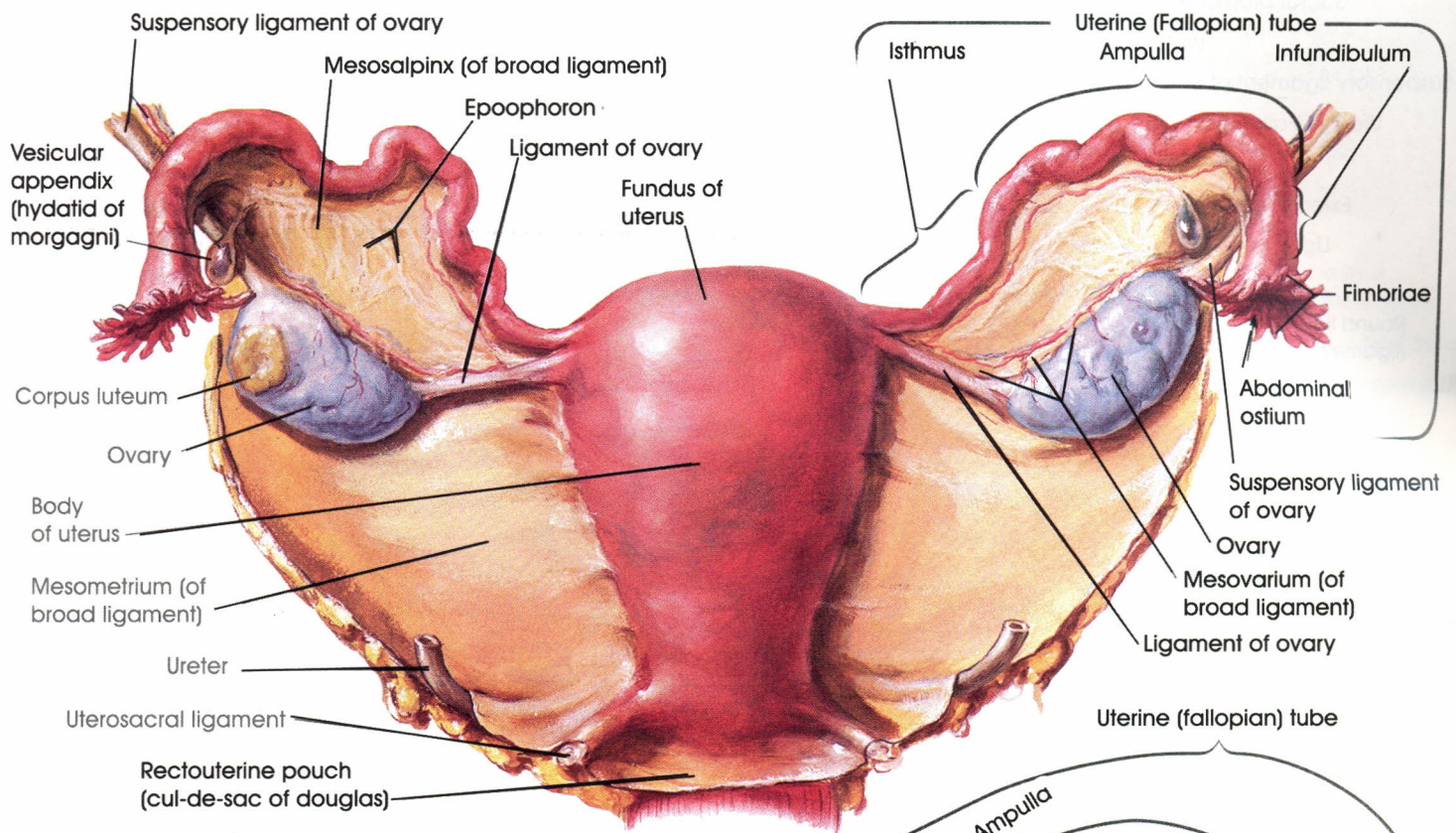


Paramedian (sagittal) dissection



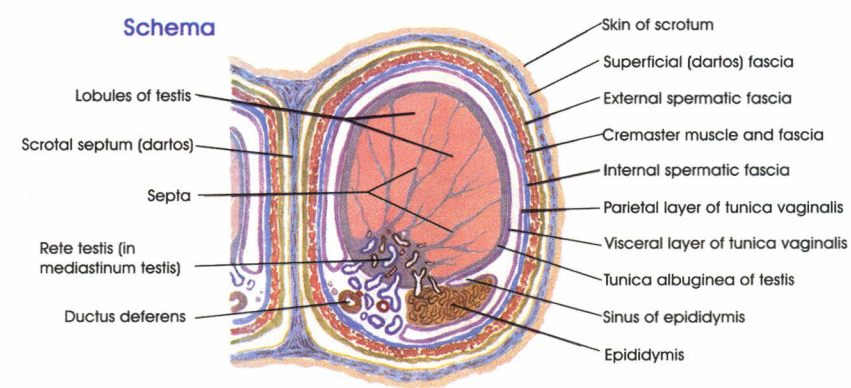
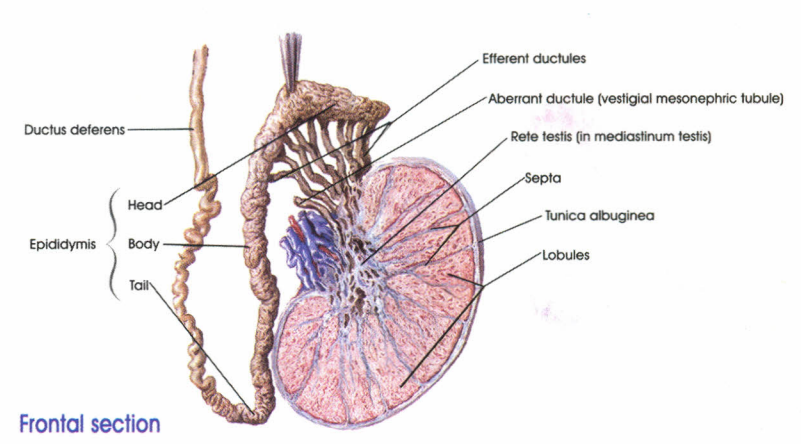
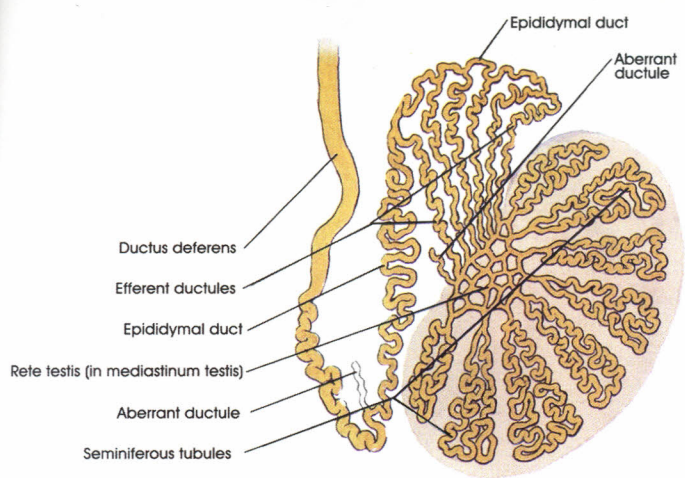
Pelvic Viscera and Perineum: Female

Posterior view

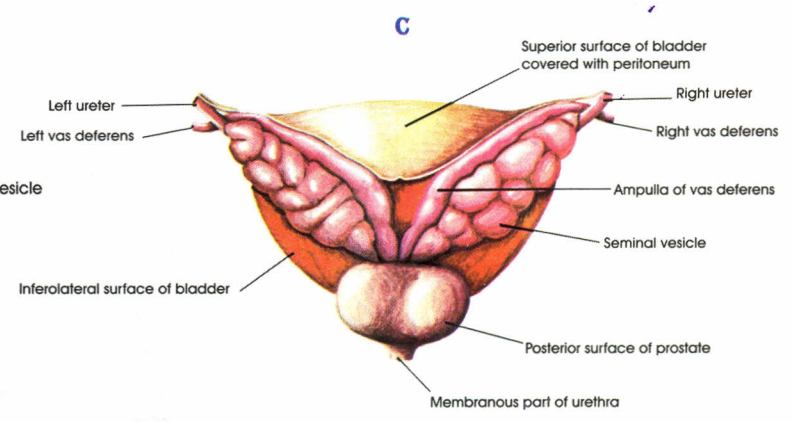
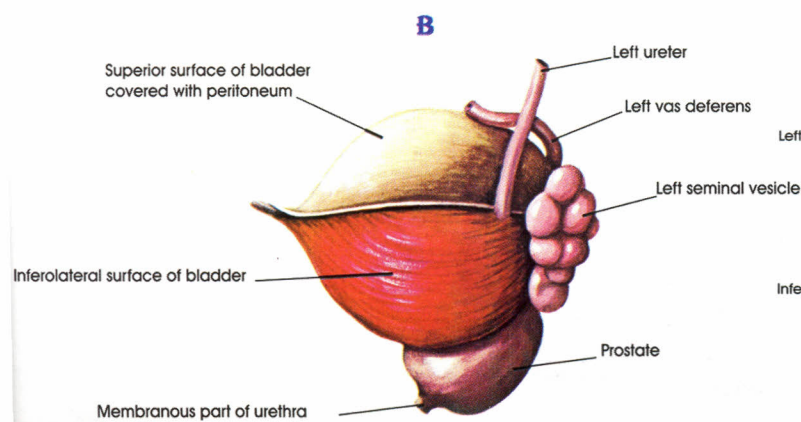
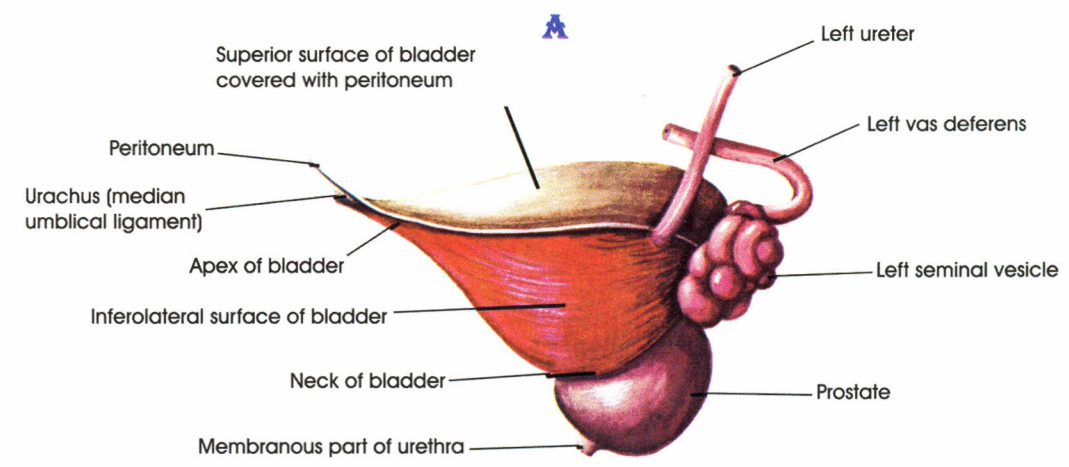


Frontal section

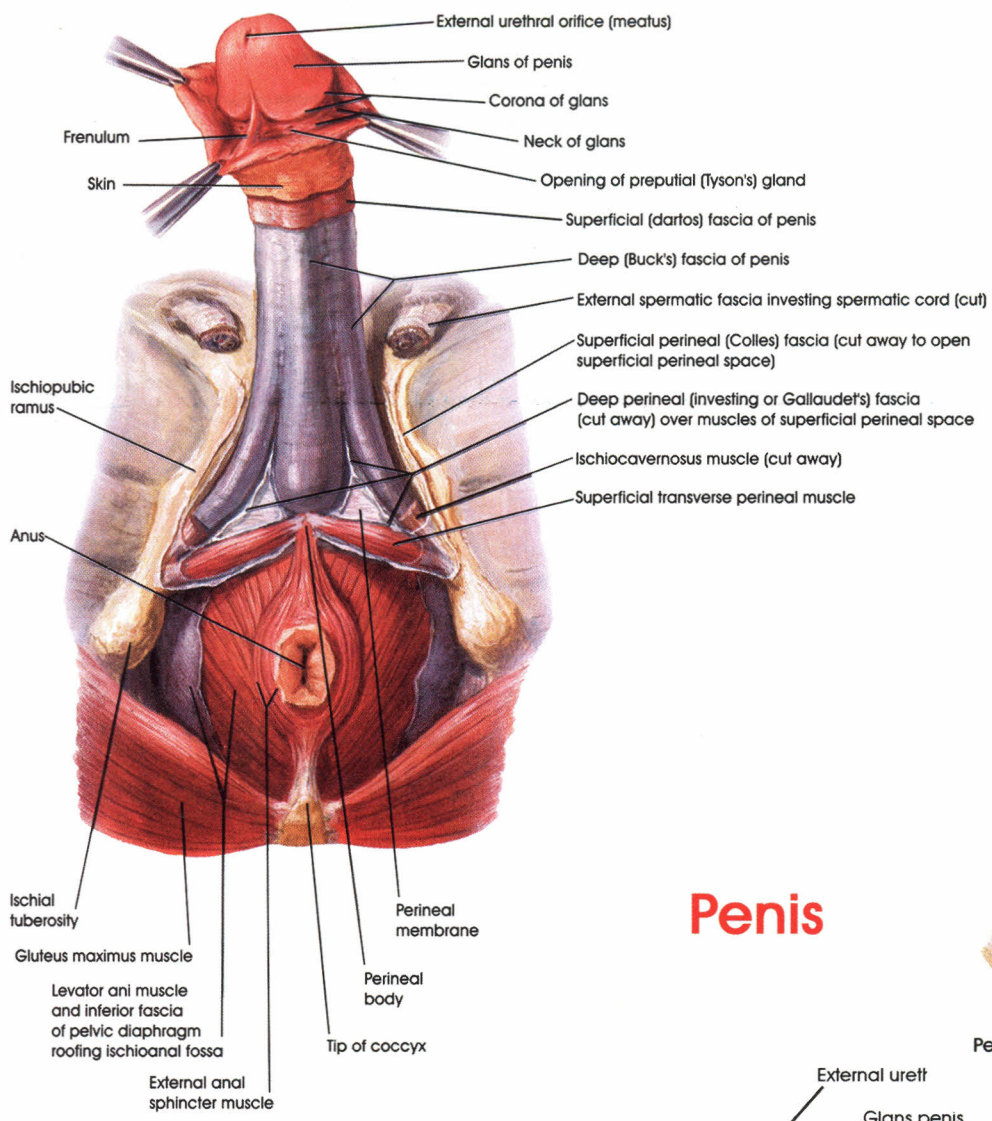
Uterus and adnexa



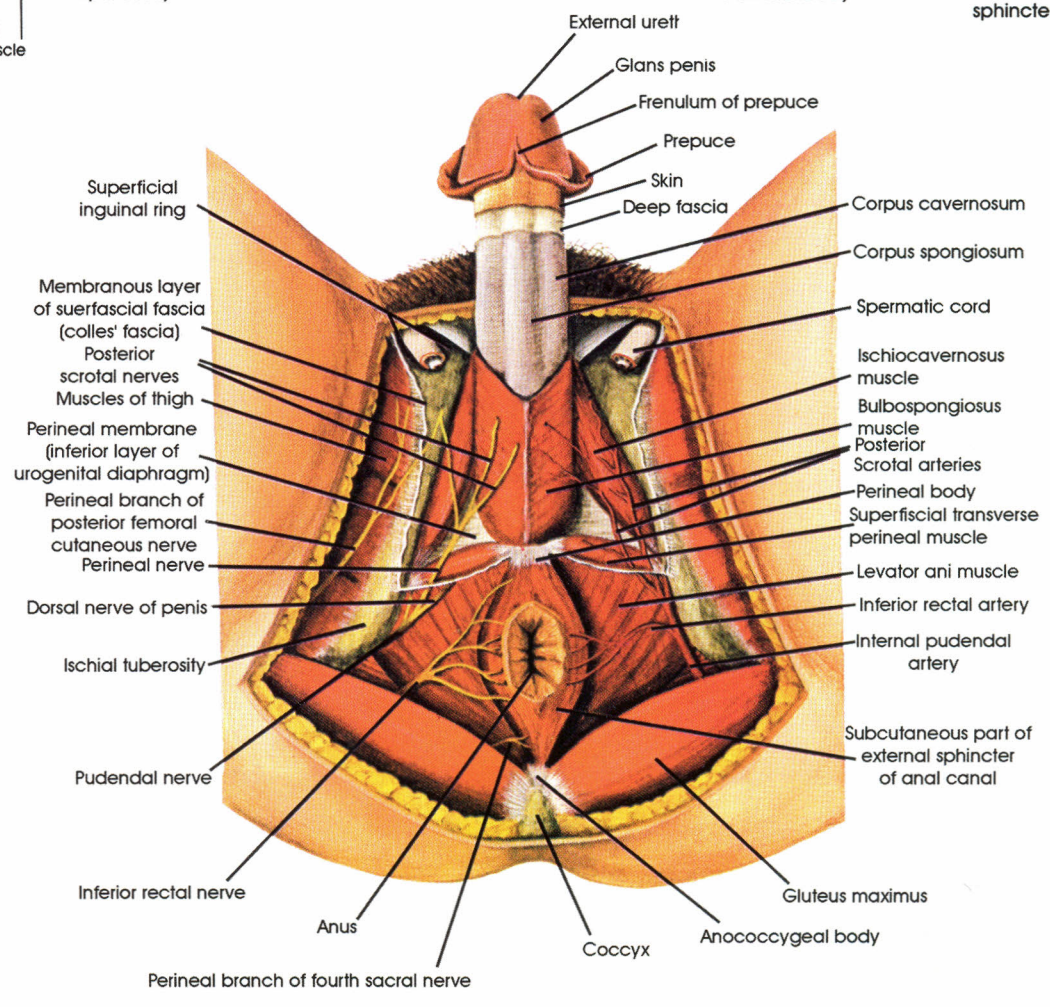
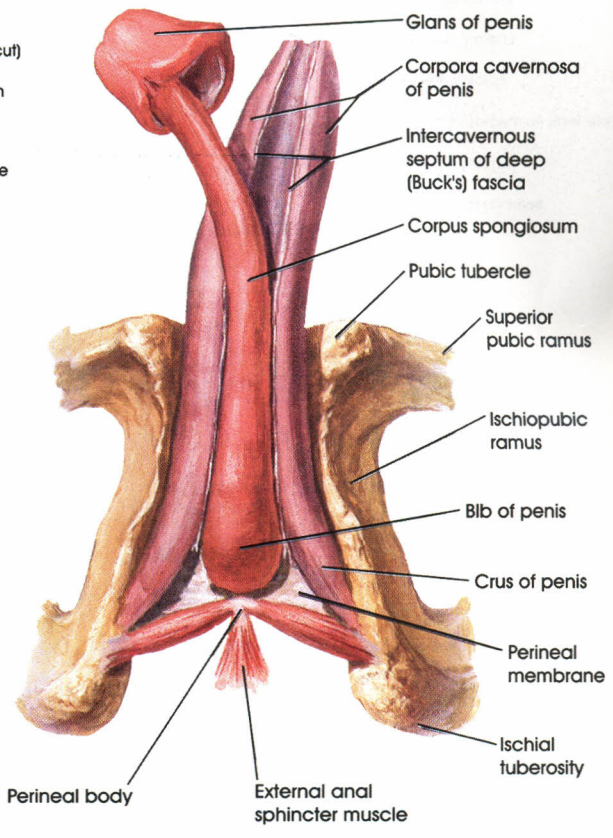
Testis, Epididymis and Ductus Deferens



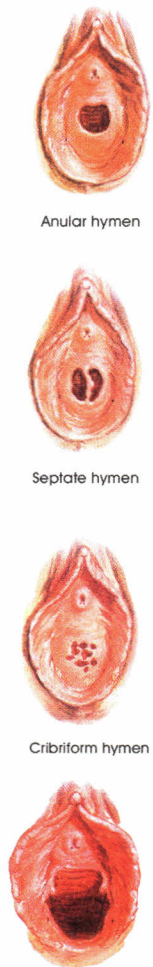
A: Empty, lateral view
 B: Full, lateral view
 C: Empty, posterior view



Penis



Male Urogenital Triangle and Anal Triangle

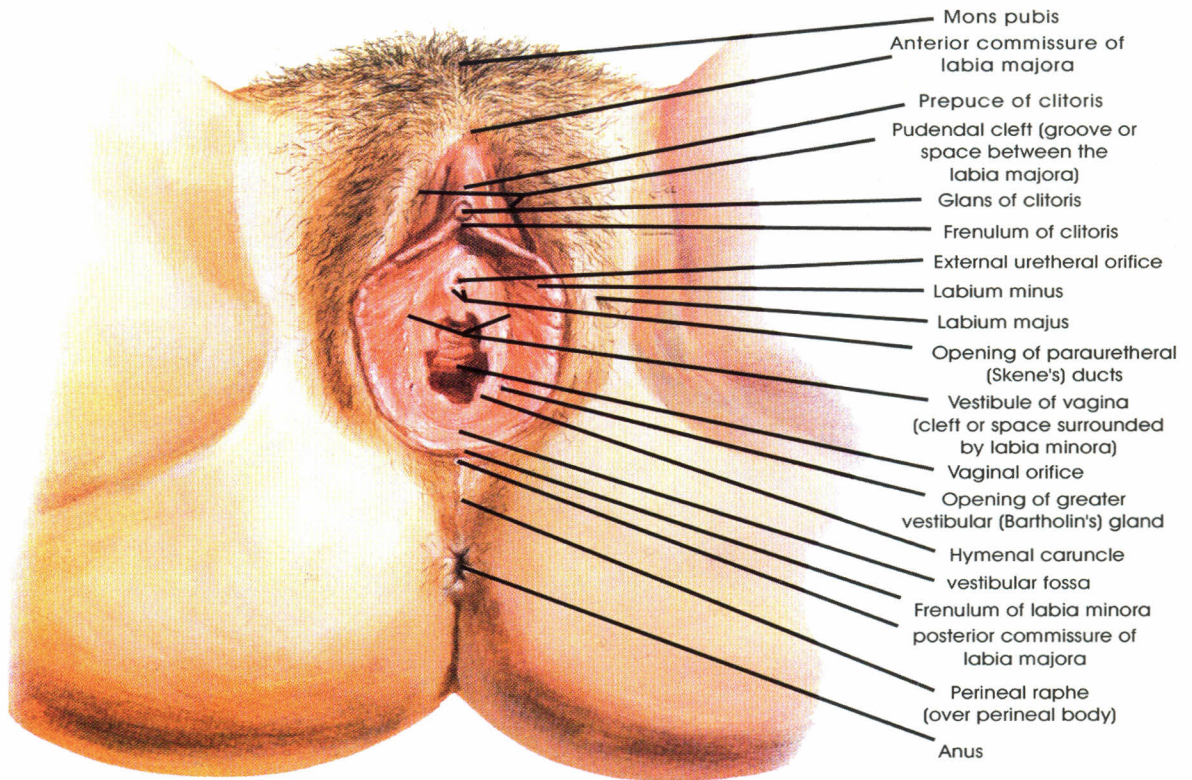


Anular hymen

Septate hymen

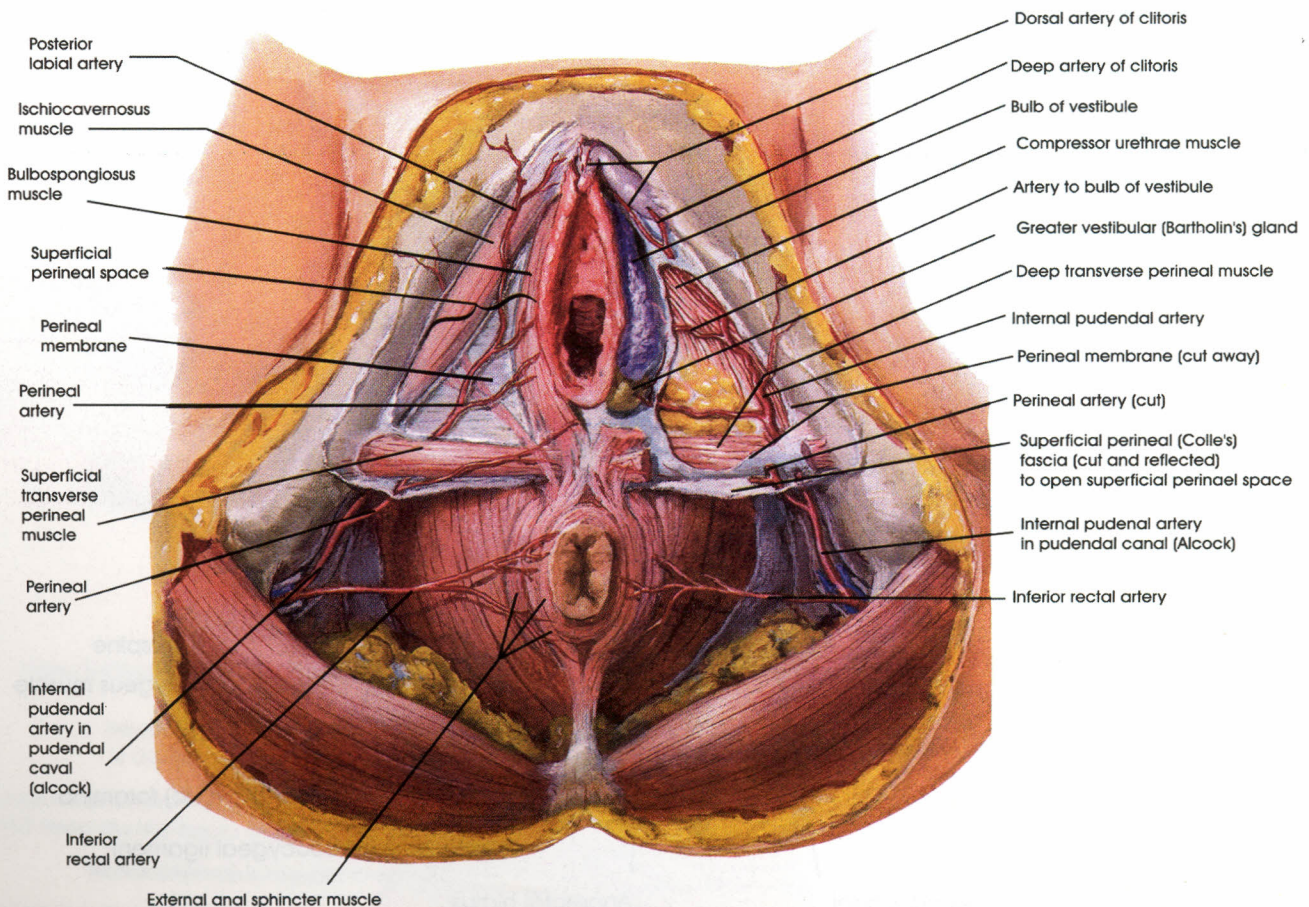
Cribriform hymen

Parous introitus



- Mons pubis
- Anterior commissure of labia majora
- Prepuce of clitoris
- Pudendal cleft (groove or space between the labia majora)
- Glans of clitoris
- Frenulum of clitoris
- External urethral orifice
- Labium minus
- Labium majus
- Opening of paraurethral (Skene's) ducts
- Vestibule of vagina (cleft or space surrounded by labia minora)
- Vaginal orifice
- Opening of greater vestibular (Bartholin's) gland
- Hymenal caruncle
- vestibular fossa
- Frenulum of labia minora
- posterior commissure of labia majora
- Perineal raphe (over perineal body)
- Anus

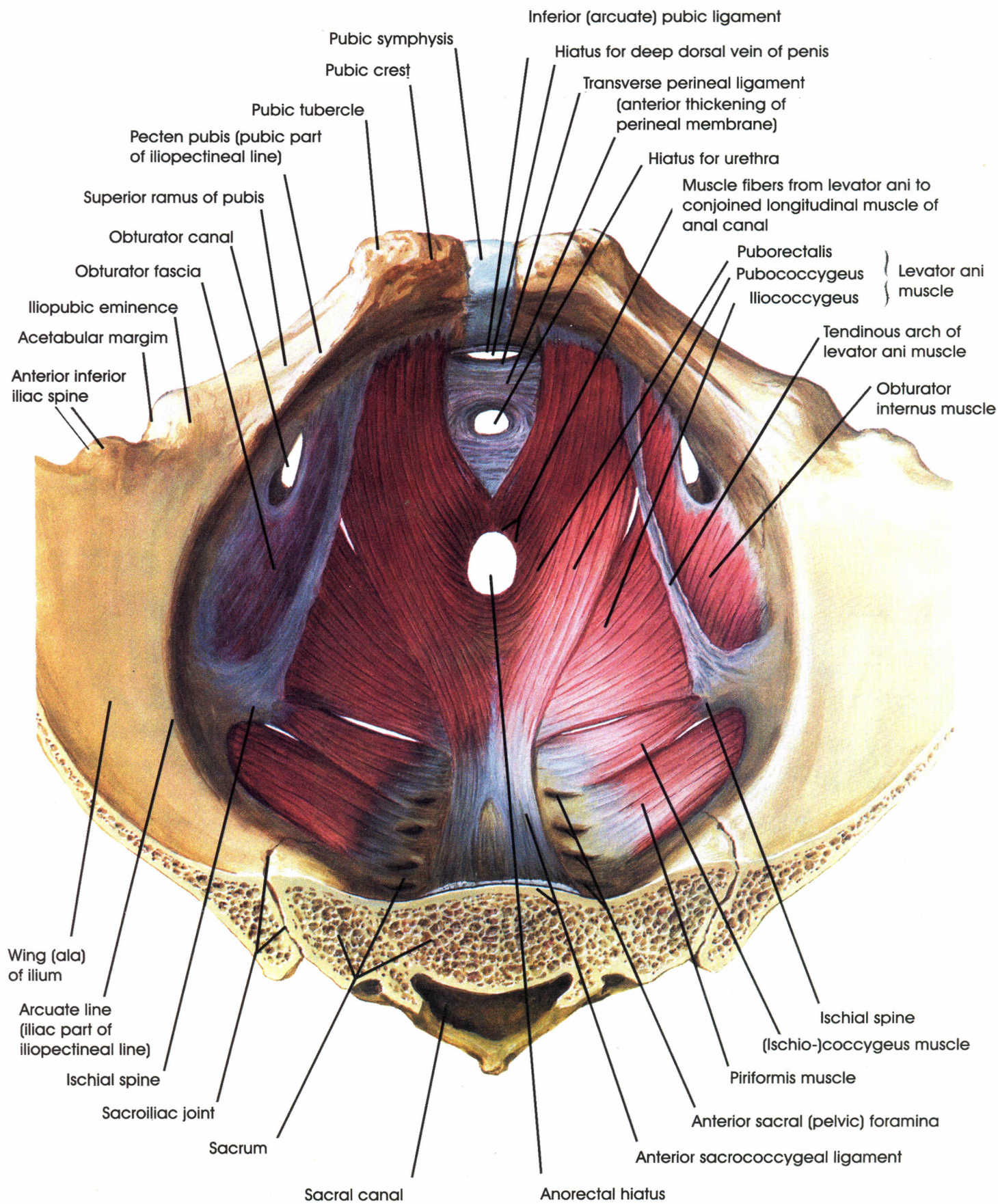
Perineum and External Genitalia (pudendum or vulva)



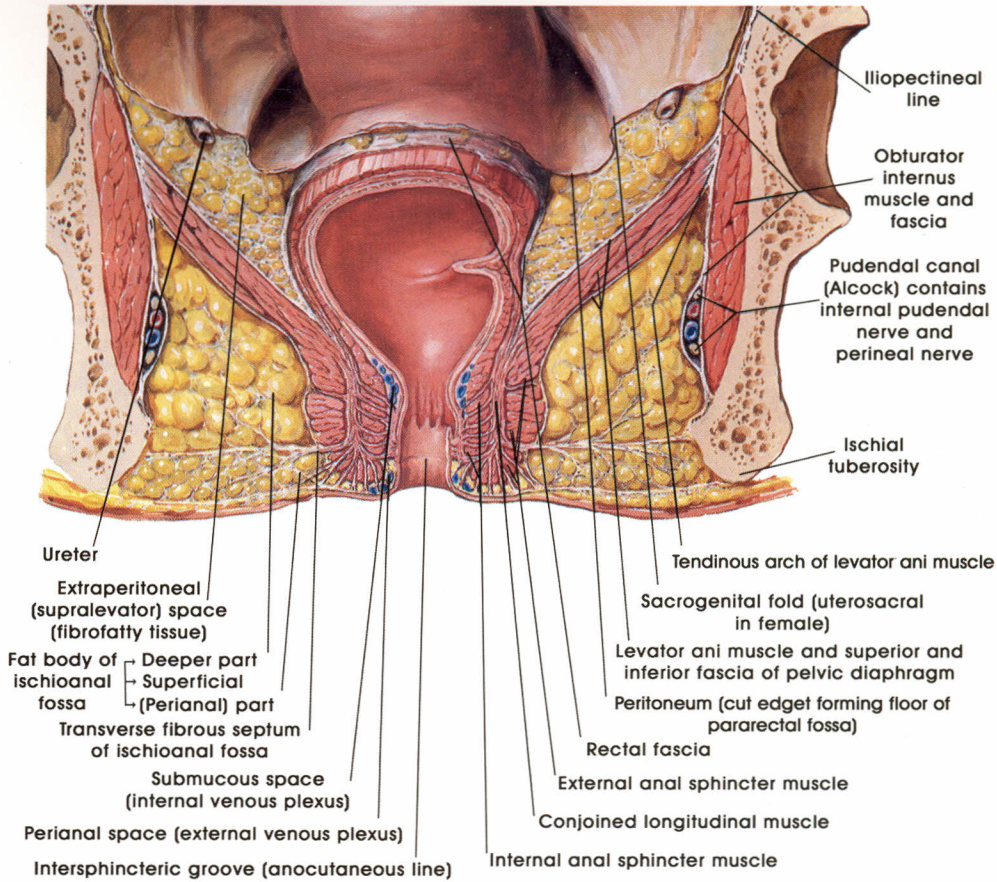
- Posterior labial artery
- Ischiocavernosus muscle
- Bulbospongiosus muscle
- Superficial perineal space
- Perineal membrane
- Perineal artery
- Superficial transverse perineal muscle
- Perineal artery
- Internal pudendal artery in pudendal canal (Alcock)
- Inferior rectal artery
- External anal sphincter muscle
- Dorsal artery of clitoris
- Deep artery of clitoris
- Bulb of vestibule
- Compressor urethrae muscle
- Artery to bulb of vestibule
- Greater vestibular (Bartholin's) gland
- Deep transverse perineal muscle
- Internal pudendal artery
- Perineal membrane (cut away)
- Perineal artery (cut)
- Superficial perineal (Colle's) fascia (cut and reflected) to open superficial perineal space
- Internal pudendal artery in pudendal canal (Alcock)
- Inferior rectal artery

Female perineum

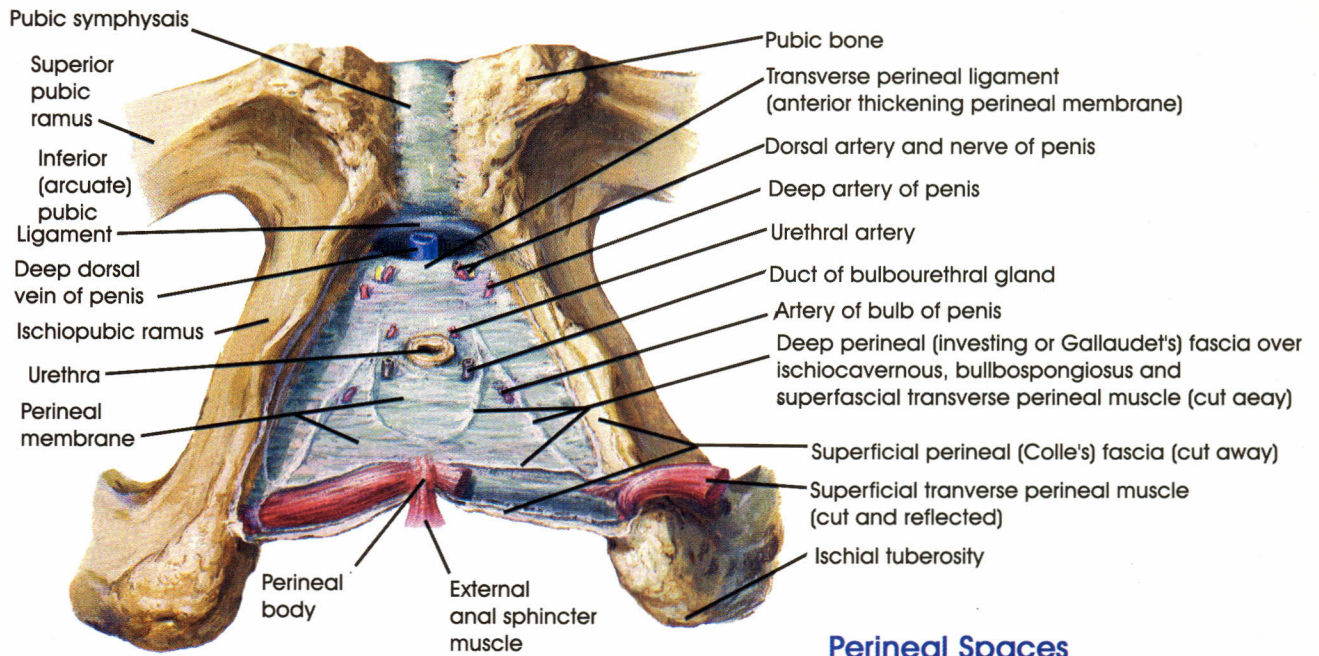
**Superior view
(Viscera removed)**



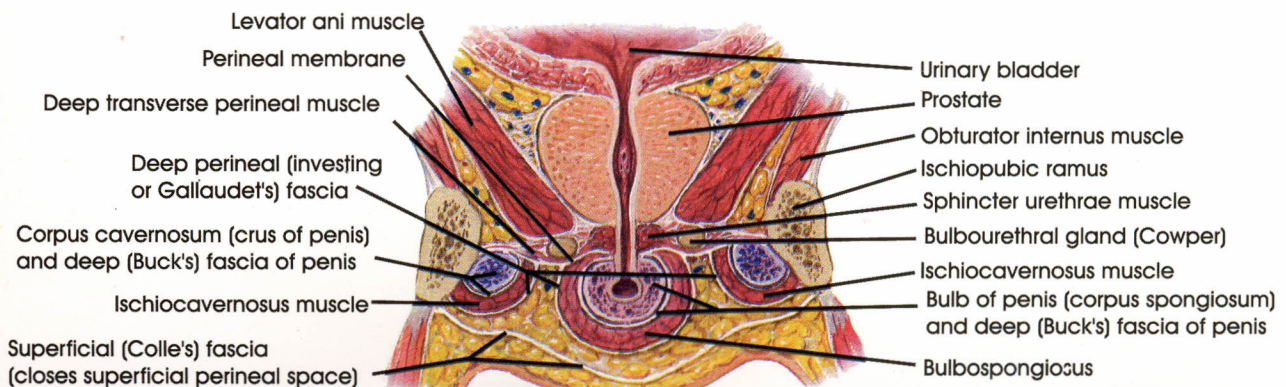
Pelvic Diaphragm, Male



Ischio anal Fossa



Perineal Spaces



Frontal section, anterior view of perineum